

ACCELERATING THE TRANSITION TO SUSTAINABILITY

Universität Oldenburg, Hörsaalzentrum A14, Uhlhornsweg 86, 26129 Oldenburg

Thursday, September 28

TIME	AGENDA	LOCATION
09:00 - 10:00	Registration	A14 Foyer
10:00 - 10:30	Welcome & Opening Remarks <i>Christiane Thiel (Vice President University of Oldenburg), Joern Hoppmann</i>	A14 Hörsaal 3
10:30 - 12:00	Parallel Paper Session 1	See p. 2
12:00 - 13:00	Lunch	A14 Foyer + A14 0-030
13:00 - 14:30	Parallel Paper Session 2	See p. 3
14:30 - 15:00	Coffee Break	A14 Foyer + A14 0-030
15:00 - 16:00	Keynote "Transformationsprozesse in Richtung Nachhaltigkeit: Erfahrungen bei der Rügenwalder Mühle" <i>Speaker: Claudia Hauschild, Head of Corporate Communications & Sustainability Management Rügenwalder Mühle; Moderation: Klaus Fichter</i>	A14 Hörsaal 3
16:00 - 16:30	Coffee Break	A14 Foyer + A14 0-030
16:30 - 18:00	Parallel Paper Session 3	See p. 4
19:00 - 24:00	Dinner at Oldenburg Castle	Schlossplatz 1, 26122 Oldenburg

Friday, September 29

TIME	AGENDA	LOCATION
08:00 - 09:00	VHB Meeting <i>Moderation: Magnus Fröhling</i>	A14 Hörsaal 3
09:00 - 10:30	Parallel Paper Sessions 4	See p. 5
10:30 - 11:00	Coffee Break	A14 Foyer + A14 0-030
11:00 - 12:00	Panel Discussion "Impacting the Sustainability Transition: Is Rigorous Research Enough?" <i>Panelists: Rüdiger Hahn, Timo Busch, Moderation: Christian Busse</i>	A14 Hörsaal 3
12:00 - 12:15	Closing Remarks	A14 Hörsaal 3
12:15 - 13:30	Lunch	A14 Foyer + A14 0-030

Parallel Paper Session 1: Thursday, September 28, 10:30-12:00

	Session 1.1 INSTITUTIONS & INSTITUTIONALIZATION	Session 1.2 CIRCULAR ECONOMY	Session 1.3 IMPACT MEASUREMENT & INVESTING	Session 1.4 EXPERIMENTAL METHODS
	Room: A14 0-031 Chair: Timo Busch	Room: A14 1-112 Chair: Marlen Arnold	Room: A14 1-113 Chair: Rüdiger Hahn	Room: A14 1-114 Chair: Stefan Hoffmann
10:30 - 11:00	<p>Transposition Across Highly Distant Institutional Contexts</p> <p>Satwant Dahiya</p>	<p>Consumer-to-Business Selling Platforms: A Novel Business Model to Advance Secondhand Markets and Extend Product Use Phases?</p> <p>Christoph Ratay</p>	<p>SFDR Article 9: Is it all about impact?</p> <p>Lisa Scheitza, Timo Busch</p>	<p>Herausforderungen von Sprunginnovationen für eine nachhaltige Entwicklung am Beispiel von Cultured Meat: Eine experimentelle Untersuchung zu den Konsequenzen persönlicher Betroffenheit</p> <p>N. Lin-Hi, J. Böttcher, M. Reimer, K. Schäfer, I. Blumberg</p>
11:00 - 11:30	<p>Treiber und Herausforderungen der Adaptation des Cultural Fit für KMU</p> <p>Hannelore Hofmann</p>	<p>Utilizing stakeholder and social network analysis for the development of circular economy practices in real estate</p> <p>Mari Hermanns, Peter Letmathe</p>	<p>Company Impact Data in Impact Investing: Quo vadis?</p> <p>Timo Busch, Brigitte Bernard-Rau, Hendrik Brosche</p>	<p>Advancing CSR Research Through Experimental Methods: A Review and Pathways Forward</p> <p>Jannis Kreinhop, Josua Oll, Dirk Ulrich Gilbert</p>
11:30 - 12:00	<p>Breaking the ICE? How demand-pull and technology-push policies for emerging technologies shape innovation in incumbent firms</p> <p>H. Luetkehaus, K. Gaertner, J. Hoppmann, A. Nuñez-Jimenez</p>	<p>Recycling Business Models for a Circular Economy: Identifying Major Design Characteristics</p> <p>Julia Gebert</p>	<p>Ally or Enemy: Power Dynamics in the Impact Investor Social Enterprise Dyad</p> <p>Lena Schätzlein, Niko Gerlach, Deike Schlütter</p>	

Parallel Paper Session 2: Thursday, September 28, 13:00-14:30

	Session 2.1 BIODIVERSITY	Session 2.2 REPORTING	Session 2.3 TENSIONS & PARADOXES	Session 2.4 SUPPLY CHAIN ACCOUNTING
	Room: A14 0-031 Chair: Magnus Fröhling	Room: A14 1-112 Chair: Karola Bastini	Room: A14 1-113 Chair: Stefan Gold	Room: A14 1-114 Chair: Stefan Seuring
13:00 - 13:30	<p>Corporate Biodiversity Management: Insights from the Extractive Industry in Germany</p> <p><i>Patrick Schöpflin, Gesa Marken, Anneli Heinrich</i></p>	<p>Environmental Photograph Utilization in Corporate Sustainability Reporting: An Automated Visual Content Analysis</p> <p><i>Lorenz Fenk</i></p>	<p>Peering Through Paradox – How Sustainability Professionals Navigate the Mission-Market Paradox Together</p> <p><i>Svenja Rehwinkel, Steffen Farny</i></p>	<p>Exploring Sustainability Priorities in Purchasing Decisions Based on Inverse Optimization</p> <p><i>Florian Kellner, Sebastian Utz</i></p>
13:30 - 14:00	<p>Biodiversitätsberichterstattung im Kohlebergbau</p> <p><i>Vera Braun, Corinne Bundscherer, Sarah Bärsch, Remmer Sassen</i></p>	<p>Biodiversity reporting: How well do financial institutions disclose related impacts?</p> <p><i>Leyla Azizi, Christoph Scope, Anne Ladusch, Remmer Sassen</i></p>	<p>Paradoxical Tensions in Blockchain Implementation for Supply Chain Social Sustainability</p> <p><i>Paula Zalcborg Weissmann, Janine Allenbacher, Philipp Christopher Sauer</i></p>	<p>Die Scope 3 THG-Bilanzierung im Kontext von Supply Chain Management und Institutionalisierung</p> <p><i>Dominic Graf, Martin Ulber, Marlen Arnold</i></p>
14:00 - 14:30	<p>Contributions of private financial institutions to biodiversity protection: a case study of Fortune Global 500 financial institutions from the United Kingdom and Germany</p> <p><i>Lisa Junge, Yu-Shan Lin Feuer, Remmer Sassen</i></p>	<p>Cracking the code for sustainability – the role of non-financial reporting for SME organizational change for sustainability</p> <p><i>Manon Filler, Sarah Bärsch, Remmer Sassen</i></p>	<p>Affects in Transition How Sustainability is Introduced to German Theatres</p> <p><i>Coco Klußmann</i></p>	<p>What is Supply Chain Due Diligence? A Systematic Review of the Literature on Sustainable Supply Chains</p> <p><i>Charlotte Both, Miriam Wilhelm</i></p>

Parallel Paper Session 3: Thursday, September 28, 16:30-18:00

Session 3.1 SYSTEMS & TRANSITIONS		Session 3.2 SUPPLY CHAIN PERFORMANCE & IMPACT		Session 3.3 GOVERNANCE & ORGANIZATIONAL DESIGN	
Room: A14 0-031 Chair: Bernd Siebenhüner		Room: A14 1-112 Chair: Karsten Kieckhäfer		Room: A14 1-113 Chair: Remmer Sassen	
16:30 - 17:00	<p>The role of digitalization for sustainability: a socio-technical systems perspective</p> <p><i>Frederik Maibaum, Alicia Minnerup, Johann Nils Foege, Johannes Kriebel, Laura Marie Edinger-Schons, Caroline Ruiner, Sascha Alavi</i></p>	<p>Bridging Boundaries: Quality, Impact and Resilience in Coffee Supply Chains</p> <p><i>Eugenia Rosca, Mellie Pullman</i></p>	<p>Raising the bar: What determines the aspiration levels of corporate GHG emission reduction targets?</p> <p><i>Matthew Johnson, Clara Privato, Timo Busch</i></p>		
17:00 - 17:30	<p>Exploring the Role of Technological Niches in Driving Sustainability Transitions</p> <p><i>Ana Vanacker, Michael Rennings, Stefanie Bröring</i></p>	<p>Scrutinizing the Value of Sustainable Reputation for the Supplier: Evidence from a Cross-lagged Panel Model of More than 4,000 Relationships</p> <p><i>Christian Busse, Thomas Bortolotti, Dagmar Reinerth</i></p>	<p>Linking Executive Pay to ESG Criteria in German Listed Firms - A Review and Recommendations</p> <p><i>Karola Bastini, Franziska Spallek</i></p>		
17:30 - 18:00	<p>A configurational approach to understanding incumbent firm behavior in sustainability transitions</p> <p><i>Sabrina Schmidt, Samanthi Dijkstra-Silva</i></p>	<p>A Matter of Perspective: Sustainability, Risk and Performance in Textile and Apparel Supply Chains</p> <p><i>Ronak Warasthe, Marcus Brandenburg, Stefan Seuring</i></p>	<p>Structural perspectives on organizational sustainability: Towards a typology</p> <p><i>Annabelle Müller, Martin Friesl</i></p>		

Parallel Paper Session 4: Friday, September 29, 09:00-10:30

Session 4.1 ORGANIZATIONAL LEARNING & CHANGE		Session 4.2 SUPPLY CHAIN INFORMATION & DIGITALIZATION		Session 4.3 CONSUMERS & MARKETING	
Room: A14 0-031 Chair: Marcus Wagner		Room: A14 1-112 Chair: Florian Kellner		Room: A14 1-113 Chair: Sascha Alavi	
09:00 - 09:30	<p>Stop Talking, Start Doing – Learning from Work-In-Progress Experiences with praxiSDG</p> <p><i>Martin Gerner, Sylvia Maus</i></p>	<p>Sourcing and managing sustainable supply chain information and requirements along supply chain tiers. A multiple case study in the textile industry</p> <p><i>Naemi Schäfer, Samantha Dijkstra-Silva, Katherine Christ</i></p>	<p>Circular Value Chain Paradox - A Scoping Review</p> <p><i>Tom Hunger, Marlen Arnold</i></p>		
09:30 - 10:00	<p>Overcoming barriers to corporate deep decarbonization: A multiple-case study</p> <p><i>Theresa Sophie Rötzel</i></p>	<p>Emerging Information Technologies for Sustainability in Supply Chain Management: A Systematic Review</p> <p><i>Emma Lloyd, Samantha Dijkstra-Silva, Anna-Luisa Stöber</i></p>	<p>CSR Investment Timing in a Duopoly: The Threat of Responsibility Violations in the Context of Socially Conscious Consumers</p> <p><i>Stefan Kupfer, Elmar Lukas</i></p>		
10:00 - 10:30	<p>Breaking barriers and building bridges: The positive impact of disabled people on the social sustainability of organizations</p> <p><i>Maleen Halter, Wolfgang Bichler-Riedl, Stephanos Anastasiadis, Stefan Gold</i></p>		<p>Supporting the Transition to Sustainable Consumption with Carbon Footprint Tracking Apps</p> <p><i>Stefan Hoffmann, Wassili Lasarov</i></p>		

Conference Venue: Directions

Carl von Ossietzky Universität Oldenburg, Building A14
Uhlhornsweg 86, 26129 Oldenburg



Directions

By public transport:

When arriving at Oldenburg Hauptbahnhof (Main Station), leave the station to the south and, departing from the stop **“Hauptbahnhof Süd”** take one of the following **busses to „Uni/Campus Haarentor”**:

- 306 ("Universität"),
- 310 ("Wehnen/Famila-Center")
- S35 („Westerstede Hössenbad")

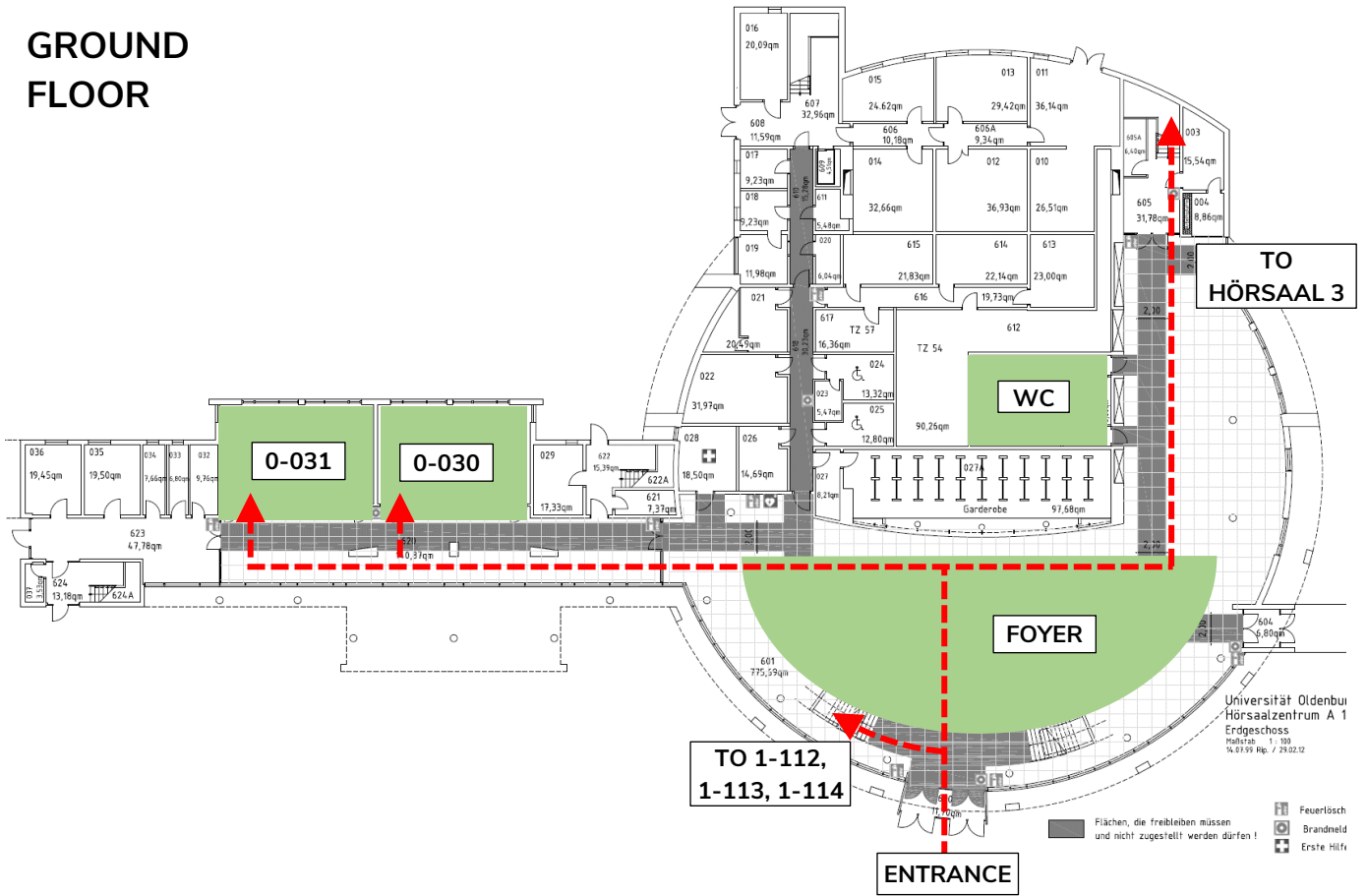
Exit after seven stops at Uni/Campus Haarentor. The Hörsaalzentrum (building A14) is the big round-shaped building with „A14” above the door and bikes in front diagonally across the street (see map above).

By car:

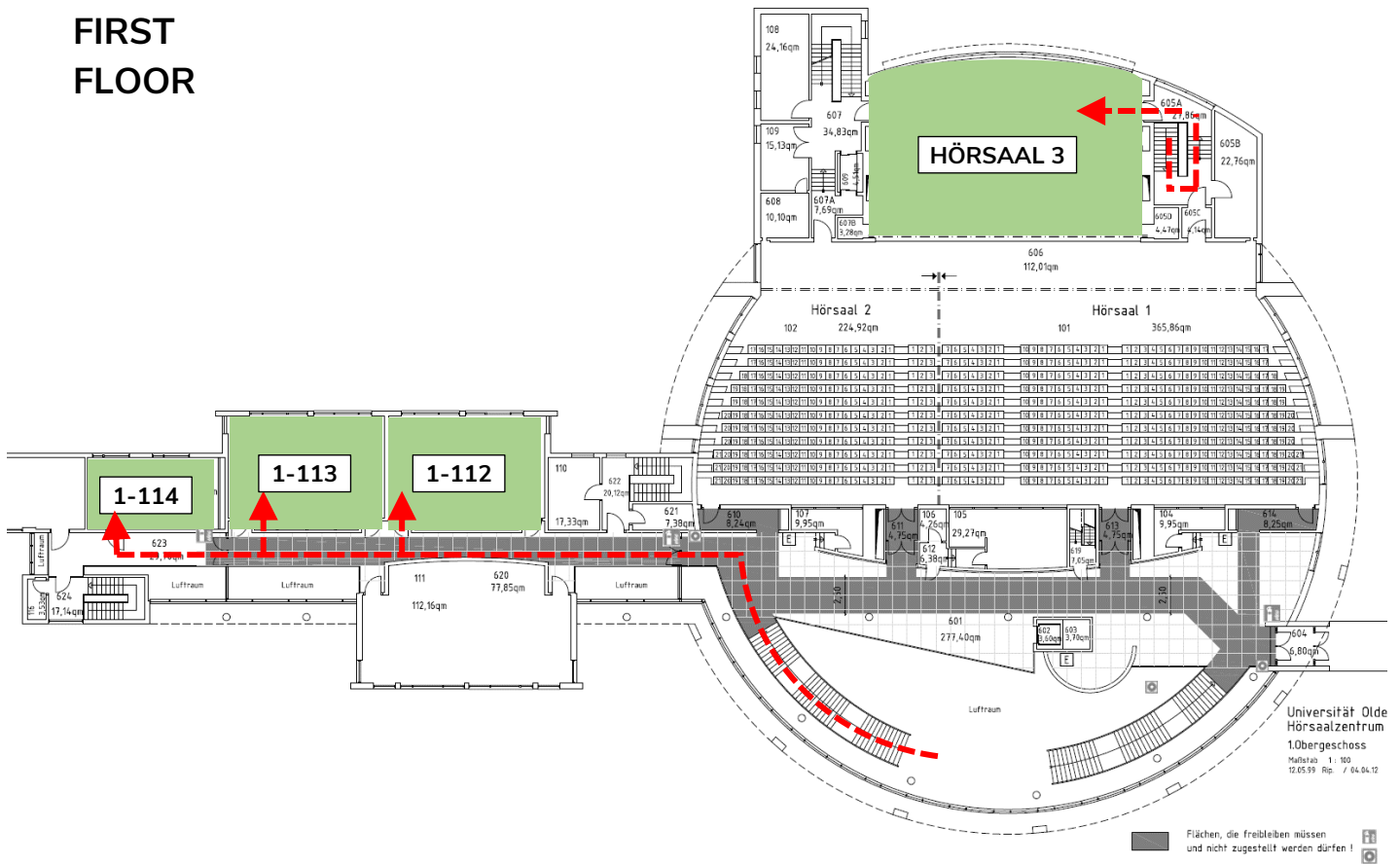
We don't recommend travelling by car for environmental reasons. If you really have to use the car, you can park it in the location marked in the map above. From the parking spot, it is only a short walk to the conference venue.

Conference Venue: Room Map

GROUND FLOOR



FIRST FLOOR



Dinner at Oldenburg Castle

Thursday, September 28, 19:00
Schlossplatz 1, 26122 Oldenburg



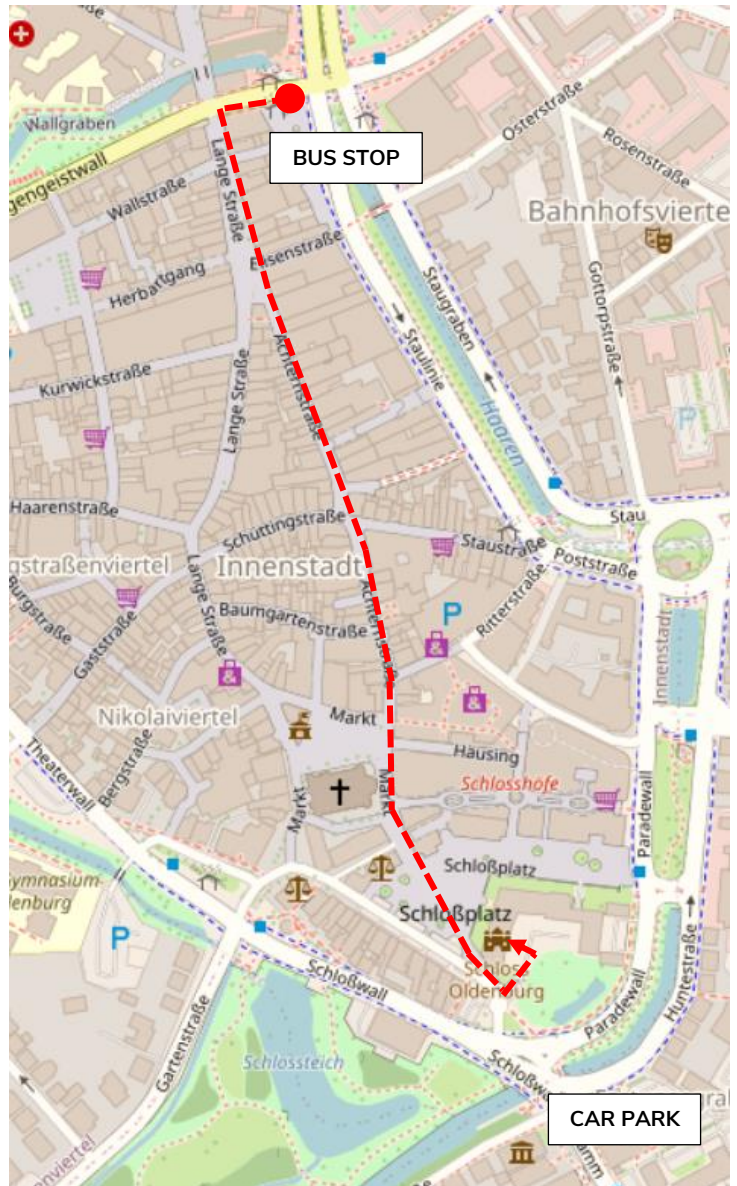
Directions

By public transport from the conference venue:

Walk to bus stop “Uni/ Campus Haarentor” (see map above), take the **Bus 306, 310, or S35** back into town and exit at “Lappan”. From there it is possible to walk (see red dotted line on the map to the right) or to take the **Bus 314 to “Hundsmühlen”** and exit at the second stop at “**Oldenburg Schlossplatz**” at the Castle. The entrance is in the castle’s inner courtyard. There are lockers in the cloakroom, so you can lock your laptop.

By car:

Use the possible parking space “Prinzenpalais” at the “Landesmuseum Huntestraße” marked on the map



Organizers

Prof. Dr. Jörn Hoppmann (joern.hoppmann@uol.de)

Prof. Dr. Christian Busse (christian.busse@uol.de)

Prof. Dr. Bernd Siebenhüner (bernd.siebenhuener@uol.de)

Prof. Dr. Klaus Fichter (klaus.fichter@uol.de)

Prof. Dr. Sascha Alavi (sascha.alavi@uol.de)

Dr. Josua Oll (josua.oll@uol.de)

E-Mail: nama2023@uol.de

Website: <https://uol.de/nama2023>

