

# Phylogenetic Position of the Giant Panda

HISTORICAL CONSENSUS THROUGH SUPERTREE ANALYSIS

Olaf R. P. Bininda-Emonds

PERHAPS NO QUESTION in mammalian systematics has engendered such long-term controversy and uncertainty as the phylogenetic placement of the giant panda (*Ailuropoda melanoleuca*). Although its formal introduction to Western science placed it as a member of the bear family (Ursidae) (David 1869), similarities to the lesser or red panda (*Ailurus fulgens*) and, by extension, raccoons and allies (Procyonidae) were quickly noted (Milne-Edwards 1870). Since that time, a variety of evidence has been used to ally *Ailuropoda* with ursids, procyonids, or *Ailurus* (either within the previous two families or as the separate family Ailuridae), or to place it in a family by itself (Ailuropodidae). Fueled largely by molecular evidence, there is perhaps finally a growing consensus that *Ailuropoda* represents the sister group to the remaining ursids.

In this chapter, I approach the question of panda phylogeny from a historical perspective to examine trends in the placement of *Ailuropoda* through time. My work follows on from that of O'Brien et al. (1991), although it differs in two key respects. First, I employ a phylogenetic rather than a taxonomic perspective. The taxonomic status of any species is highly subjective (e.g., is

*Ailuropoda* "sufficiently distinct" to justify being placed in its own family?), whereas a study of its phylogenetic or sister-group relationships is much more objective and concrete. Second, through the use of supertree construction (sensu Sanderson et al. 1998), I am able to infer the consensus estimate of the affinity of *Ailuropoda* for any given time period. Thus, I can demonstrate how consensus opinion has shifted over time and by how much. This resembles work done previously with *Ailurus* and the pinnipeds (Bininda-Emonds 2000a). Because *Ailurus* has played a critical historical role in the controversy surrounding the origin of *Ailuropoda*, I also perform similar analyses for it here.

## ISSUES OF EVIDENCE AND CONVERGENCE

The uncertainty surrounding the placement of *Ailuropoda* derives from the numerous similarities that it shows to each of ursids, procyonids, and especially to *Ailurus*. In fact, were it not for the existence of the procyonid-like *Ailurus*, the acceptance of *Ailuropoda* as an ursid would likely be considerably less—if at all—in dispute. The

TABLE 1.1  
*Shared Features between Ailuropoda and Ursids, Procyonids, and Ailurus*

FEATURE OF <i>AILUROPODA</i>	URSIDAE	PROCYONIDAE	<i>AILURUS</i>
<b>Morphology</b>			
Size and gross morphology	+		
Skull robustness	-		
Brain morphology	+		
Auditory region and ossicles	+		
Epipharyngeal bursa		+	
Ridges on hard palate	+		
Dentition (especially massive size)	-		+
Skeletal robustness	-	+	
Specialized sesamoid on forepaw			? (unique)
Respiratory tract	+		
Intestines (shorter and less complex)	-		
External (soft) morphology	? (unique)		
Genitalia			+
Coloration		+	+
Hair structure	+		
<b>Molecular</b>			
Karyotype	+	+	+
Serology/immunology	+		
Sequence data	+		
<b>Behavioral</b>			
Vocalizations	-	+	+
Life history traits	+		?
Scent marking (and glands)	-		+
Feeding behavior			+
Mating behavior			+
<b>Other</b>			
Fossil affinities	+		

NOTES: A plus sign indicates that the feature is similar between the two taxa. A minus sign indicates that the feature has been used to argue against a relationship between the two taxa, even if *Ailuropoda* does not share the feature with another taxon.

key lines of evidence used to infer the ancestry of *Ailuropoda* historically are given in table 1.1. The majority of evidence, both morphological and molecular, allies *Ailuropoda* with ursids. Fossil evidence, particularly the inferred close relationship with the Pliocene fossil ursid *Hyaenarctos* (now included in *Agriotherium*, a member of the extinct sister group to ursids) (McKenna and Bell 1997; Hunt, chapter 3), also unanimously indicates an ursid origin.

In one of the most thorough and impressive comparative morphological investigations for

any species, Davis (1964: 322) declared that “every morphological feature examined indicates that the giant panda is nothing more than a highly specialized bear.” However, a few morphological features have been used to argue against such a relationship, even if they do not indicate a relationship with either procyonids or *Ailurus* (“negative evidence”; see below and table 1.1). These include the greater than expected robustness of the skull, skeleton, and dentition of *Ailuropoda* for an animal of its size (Morris and Morris 1981).

Virtually all molecular evidence points to an ursid affinity for *Ailuropoda* (Waits, brief report 1.1). Only the karyotype is equivocal. In its diploid number, *Ailuropoda* ( $2N=42$ ) resembles procyonids (e.g.,  $2N=42$  for *Procyon lotor*) and *Ailurus* ( $2N=44$ ) more so than ursine bears ( $2N=74$ ). Although this observation is correctly attributed to Newnham and Davidson (1966), the attendant implication of procyonid ancestry is not. Newnham and Davidson (1966: 161) explicitly pointed out that large differences in karyotypes and diploid numbers occur within such families as Canidae (dogs) and that the evidence merely indicates *Ailuropoda* to be a different species from ursine bears. They added that the number of chromosomal arms ("nombre fundamental") might be a more informative measure in this regard. Along these lines, O'Brien et al. (1985) discovered that, although *Ailuropoda* possesses a procyonid-like diploid number, the banding patterns of its chromosomes are virtually identical to those of ursine bears. Together with other molecular evidence, they persuasively argued that *Ailuropoda* is related to ursids and that its reduced diploid number is a result of extensive chromosomal fusion in the past (see also Nash et al. 1998). It is noteworthy that similar, albeit independent, fusions have been inferred to explain the karyotype of the spectacled bear (*Tremarctos ornatus*) ( $2N=52$ ) (Nash and O'Brien 1987; Nash et al. 1998).

Finally, behavioral characteristics strongly group the two panda species together. Only life history traits are similar between *Ailuropoda* and ursids (Garshelis, chapter 4). Otherwise, *Ailuropoda* resembles *Ailurus* in its unusual scent-marking behavior and in its mating and feeding behaviors. The latter is the most remarkable, with both pandas being renowned for the ability to manipulate precisely their herbivorous food items, although only *Ailuropoda* possesses an enlarged sesamoid that acts as an analog of an opposable thumb.

Researchers have sought to make sense of the conflicting signals within the phenotypic evidence (i.e., morphological and behavioral data) through one of two evolutionary scenarios. The

first holds that *Ailuropoda* is an ursid that has shifted to an almost exclusively herbivorous diet (the so-called "bear school"). This scenario accounts for such features as the more robust dentition as being obvious (convergent) adaptations for herbivory. The second holds that *Ailuropoda* is instead derived from a small herbivore, typically with procyonid affinities, that has converged secondarily on a larger bearlike body plan (the "raccoon school"). The greater than expected robustness of the skull and skeleton has been used as evidence of rapid growth in the lineage leading to *Ailuropoda* (Morris and Morris 1981). The raccoon school in particular has relied on the negative evidence found in table 1.1 in combination with behavioral information.

Proponents of the raccoon school concede that the majority of evidence places *Ailuropoda* with ursids (e.g., Ewer 1973; Morris and Morris 1981). In supporting a nonursid origin, they instead argue that the fewer features that cluster *Ailuropoda* with either procyonids or *Ailurus* represent evolutionary novelties that are more difficult to envisage evolving on multiple occasions (Ewer 1973; Morris and Morris 1981). Similar reasons have been used to cluster megachiropteran bats with primates on the basis of a shared optic network and other neural features, in spite of an overwhelming number of similarities, mostly related to flying, with microchiropteran bats (Pettigrew 1986, 1991). An extension of this general argument is that organisms with a similar body plan are more likely to develop convergently evolved features, given similar selective regimes. This argument was used to explain why the two main groups of pinnipeds (true seals versus sea lions and walruses) were so similar morphologically, despite formerly being believed to have separate ancestors (McLaren 1960; Mitchell 1967; Repenning 1990). This conclusion is now held to be false (Wyss 1987; Vrana et al. 1994; Bininda-Emonds et al. 1999). With respect to *Ailuropoda*, the full argument is that its overall similarity with ursids applies only to features that are phenotypically plastic or that are expected to show a greater degree of convergence in response to similar selection pressures,

possibly due to the inheritance of a common, primitive, arctoid body plan (Ewer 1973; Morris and Morris 1981).

The issue is not easily resolved. Molecular evidence has played a valuable role, because convergence at this level is unlikely to mirror that at the morphological level. However, problems remain within a purely morphological domain. Character weighting continues to be a controversial area in phylogenetic systematics, with no clear guidelines. Presumably, the use of as much evidence as possible, both morphological and molecular (“total evidence”) (sensu Kluge 1989), is the key to resolving this issue. It is widely held that the best phylogenetic inference is the one supported by the most independent lines of evidence (Mickey 1978; Farris 1983; Penny and Hendy 1986; Kluge 1989; Novacek 1992; De Jong 1998). So long as homoplasy, of which convergence is one form, remains relatively rare and randomly distributed both among features and the relationships it infers (see Sanderson and Hufford 1996), the true phylogenetic history will be reflected in the majority of features. Thus, surveying as many features as possible in a cladistic framework (to distinguish shared primitive and shared derived features) (Hennig 1966) should be sufficient to overrule any instances of convergence, however improbable they might seem.

## METHODS

To examine the affinities of both panda species through time, I surveyed the systematic literature from the description of *Ailuropoda* by David (1869) to the present. In total, 105 studies presented evidence on the position of either *Ailuropoda* or *Ailurus*; this list is not exhaustive. A breakdown of the studies according to data source and whether they provided phylogenetic information about *Ailuropoda*, *Ailurus*, or both is provided in tables 1.2 and 1.3.

## DATA

Information from the literature was analyzed in one of two ways. These methods differ with re-

spect to whether panda relationships were examined in isolation or not. The first method assessed simple statements of phylogenetic affinity of the form “*Ailuropoda* is most closely related to. . . .” To summarize this information quantitatively, I derived a simple affinity metric. Statements advocating an ursid origin were scored arbitrarily as 1, those advocating a procyonid origin as -1. If ursids or procyonids formed the sister group, but not the immediate sister group to either panda species (an “extended” relationship), scores of 0.5 and -0.5 were given, respectively. When neither ursids nor procyonids could be said to be more closely related than the other, a score of 0 was given, regardless of the identity of the inferred sister group. This includes the case for which the pandas were held to be one another’s closest relatives. For any set of studies, the average value of the metric varies between -1 and 1, with more positive values indicating increasing ursid affinity and more negative values indicating increasing procyonid affinity. Values tending to zero indicate a relationship to neither group, whether due to conflicting opinions and/or an inferred relationship to another carnivore taxon.

The second method used the supertree construction method of matrix representation with parsimony analysis (MRP) (Baum 1992; Ragan 1992) to maintain the context of all other carnivore taxa mentioned in the source study. In this way, a consensus of carnivore phylogeny at any given time could be obtained, something that is possible only through supertree analysis. Combination of the primary data (total evidence) (sensu Kluge 1989) requires that these data be available and compatible. For many studies, particularly the older ones, the primary data were either not provided or were given simply in the form of a statement of phylogenetic affinity. Data types were also incompatible, meaning that they could not be analyzed simultaneously using a common algorithm. Combination of the source tree topologies using various consensus techniques (“taxonomic congruence”) (sensu Mickey 1978) was also impossible, due to the requirement that all source trees possess the same set of species.

TABLE 1.2  
*Survey of the Systematic Literature since 1869 Bearing on the Phylogenetic Placement of Ailuropoda and Ailurus*

STUDY	SISTER GROUP OF AILUROPODA	SISTER GROUP OF AILURUS	DATA SOURCE	EVIDENCE
David (1869)	Ursidae		(1)	Morphology
Milne-Edwards (1870)*	Procyonidae	Procyonidae	(1)	Osteological characters and dentition similar to lesser panda
Gervais (1870)	Ursidae	Procyonidae	(1)	Intracranial cast; skeletal morphology
Mivart (1885)*	Procyonidae	Procyonidae	(1)	Overall morphology, but primarily skull architecture and dental morphology
Flower and Lydekker (1891)*	Ursidae	Procyonidae	(1)	Review of mammals; similarity to fossil ursid, <i>Hyænarctos</i>
Winge (1895, 1941)*	Ursidae	Procyonidae	(1)	Skeletal morphology; similarity to fossil ursid, <i>Hyænarctos</i> ; dentition
Trouessart (1898, 1904)*	<i>Ailurus</i> (Ursidae)	<i>Ailuropoda</i> (Ursidae)	(1)	Taxonomy of mammals
Schlosser (1899)*	Ursidae		(1)	Similarity to fossil ursid, <i>Hyænarctos</i> ; dentition
Lankester (1901)*	Procyonidae	Procyonidae	(1)	Skull, limb, and dental morphology
Lydekker (1901)	Procyonidae	Procyonidae	(1)	Skull, limb, and dental morphology
Beddard (1902)*	Ursidae	Procyonidae	(1)	Review of mammals
Kidd (1904)*	Felidae		(1)	Arrangement of hair on nasal region
Weber (1904)	Ursidae	Procyonidae	(1)	Similarity to fossil ursid, <i>Hyænarctos</i>
Bardenfleth (1914)	Ursidae	Procyonidae	(1)	Dental and osteological morphology
Pocock (1921)	Ailuropodidae	Ailuridae	(1)	External morphology (primarily feet, ears, rhinarium, and genitalia)
Matthew and Granger (1923)	Ursidae		(1)	Morphology; similarity to fossil ursid, <i>Hyænarctos</i>

(continued)

TABLE 1.2 (continued)

STUDY	SISTER GROUP OF AILUROPODA	SISTER GROUP OF AILURUS	DATA SOURCE	EVIDENCE
Pocock (1928)	Ailuropodidae	Ailuridae	(1)	Soft external features of head and foot
Weber (1928)*	Ursidae	Procyonidae	(1)	Overall morphology; fossil affinities
Matthew (1929)	Ursidae		(1)	Morphological review of ursids
De Carle Sowerby (1932)*	<i>Ailurus</i>	<i>Ailuropoda</i>	(1)	Gross cranial morphology; dentition; coloration
Boule and Piveteau (1935)*	Ursidae	Procyonidae	(1)	Dental and basicranial morphology; fossil affinities
Gregory (1936)*	<i>Ailurus</i> (Procyonidae)	<i>Ailuropoda</i> (Procyonidae)	(1)	Skull and dental morphology
Raven (1936)*	<i>Ailurus</i> (Procyonidae)	<i>Ailuropoda</i> (Procyonidae)	(1)	Visceral and vascular anatomy
Segall (1943)*	<i>Ailurus</i>	<i>Ailuropoda</i>	(1)	Morphology of auditory region and ossicles
Kretzoi (1945)*	Ailuropodidae	Ailuridae	(1)	Dentition; fossil affinities
Simpson (1945)	<i>Ailurus</i> (Procyonidae)	<i>Ailuropoda</i> (Procyonidae)	(1)	Review of mammals
Mettler and Goss (1946)	Ursidae		(1)	Gross external brain morphology
Erdbrink (1953)	Ursidae		(1)	Dentition
Colbert (1955)*	<i>Ailurus</i> (Procyonidae)	<i>Ailuropoda</i> (Procyonidae)	(1)	Review of vertebrates
Leone and Wiens (1956)*	Ursidae		(2)	Precipitin test; serum proteins
Piveteau (1961)*	Procyonidae	Procyonidae	(1)	Dental morphology; affinity with fossil taxa
Davis (1964)	Ursidae	Unresolved	(1)	Comparative anatomy
Walker (1964)	Procyonidae	Procyonidae	(1)	Review of mammals
Wurster and Benirschke (1968), and Wurster (1969)*	Ursidae	Procyonidae	(2)	Karyology
Kretzoi (1971)	Ailuropodidae	Ailuridae	(1)	Dentition
Hendey (1972, 1980)	Ursidae		(1)	Morphology (primarily of dentition); fossil relationships
Sarich (1973, 1975, 1976)*	Ursidae	Ursidae	(2)	Immunological distance

Ewer (1973)*	<i>Ailurus</i> (Procyonidae)	<i>Ailuropoda</i> (Procyonidae)	(1)	Review of carnivores
Cave (1974)*	Procyonidae		(1)	Morphology of epipharyngeal bursa
Chu (1974)*	Ailuropodidae	Procyonidae	(1)	Morphology; dentition; ethology; neonatal allometry
Pei (1974)	Ursidae		(1)	Fossil evidence; dentition
Wang (1974)	Ursidae		(1)	Fossil evidence; cranial and dental morphology
Bugge (1978)*	Procyonidae		(1)	Morphology of cephalic arterial system
Starck (1978)*	Ursidae	Unresolved	(1)	Morphology, paleontology, and geography
De Ridder (1979)*	Ursidae	Procyonidae	(3)	Review of all available evidence
Thenius (1979)*	Ursidae	Procyonidae	(3)	Review of paleontological, morphological, serological, karyological, and ethological characters
Wurster-Hill and Bush (1980)*	Procyonidae (extended)	Procyonidae (extended)	(2)	Banded karyology
Eisenberg (1981)	Uncertain	Uncertain	(3)	Review of mammals
Morris and Morris (1981)*	<i>Ailurus</i> (Procyonidae)	<i>Ailuropoda</i> (Procyonidae)	(3)	Summary of available data (morphological, molecular, and ethological)
Pan et al. (1981)*	Ursidae		(2)	Serology
Schmidt-Kittler (1981)*		Procyonidae	(1)	Morphology of dentition and skull; fossil evidence
Ginsburg (1982)*	Ursidae	Ursidae	(1)	Skull and dental morphology
Honacki et al. (1982)	Ursidae	Procyonidae	(3)	Review of mammals
Peters (1982)*	Procyonidae	Procyonidae	(1)	Vocalization structure
Nowak and Paradiso (1983)	Ursidae	Procyonidae	(3)	Review of mammals
Wozencraft (1984)*		Ursidae	(1)	Morphology
Braunitzer et al. (1985)	Ursidae		(2)	Globin sequence
Couturier and Dutrillaux (1985)*		Procyonidae	(2)	Karyology
Eisentraut (1985)*	Ursidae	Procyonidae	(1)	Ridges on hard palate
Feng et al. (1985, 1991)*	<i>Ailurus</i>	<i>Ailuropoda</i>	(2)	Protein electrophoresis

(continued)

TABLE 1.2 (continued)

STUDY	SISTER GROUP OF AILUROPODA	SISTER GROUP OF AILURUS	DATA SOURCE	EVIDENCE
O'Brien et al. (1985)*	Ursidae	Procyonidae	(2)	DNA hybridization; isozyme genetic distance; immunological distance; karyological evidence
Pirlot et al. (1985)*	Procyonidae		(1)	Relative brain size; external brain morphology
Schaller et al. (1985)	Ursidae (extended)	Ursidae (extended)	(3)	Review of fossil, morphological, and molecular data
Romer and Parsons (1986)*	Ursidae	Procyonidae	(1)	Review of vertebrates
Tagle et al. (1986)*	Procyonidae (extended)	Procyonidae (extended)	(2)	Globin sequence
Braunitzer and Hofmann (1987)*	<i>Ailurus</i> (Procyonidae)	<i>Ailuropoda</i> (Procyonidae)	(2)	Globin sequence
Hofmann and Braunitzer (1987)*	Ursidae	Ursidae	(2)	Globin sequence
Liang and Zhang (1987)*	Ailuropodidae		(2)	Amino acid composition of LDH-M4 isozymes
Ramsay and Dunsbrack (1987)*	Ursidae		(1)	Life history traits
Flynn et al. (1988)*	Ursidae	Uncertain	(3)	Review of carnivores
Kamiya and Pirlot (1988)*	Ursidae	Unresolved	(1)	Brain size and morphology
Goldman et al. (1989)*	Ursidae	Procyonidae	(2)	Protein electrophoresis
Qiu and Qi (1989)*	Ursidae	Procyonidae	(1)	Dental morphology of new fossil discovery
Wang et al. (1989)*	Ursidae		(2)	Immunology
Wayne et al. (1989)*	Ursidae	Procyonidae	(2)	DNA hybridization
Wozencraft (1989)*	Ursidae	Ursidae	(1)	Overall morphology
Czelusniak et al. (1990)*	Ursidae	Ursidae	(2)	Globin sequences
Taylor (1990)*	<i>Ailurus</i> (Ursidae)	<i>Ailuropoda</i> (Ursidae)	(3)	Review of fossil, morphological, and molecular data
Czelusniak et al. (1991)*	Ursidae	Ursidae	(2)	Globin sequences
Dziurdzik and Nowogrodzka-Zagórska (1991)*	Ursidae	Procyonidae	(1)	Histological structure of hairs



Nowak (1991)	Ursidae	Procyonidae	(3)	Review of mammals
Zhang and Shi (1991)*	<i>Ailuurus</i> (Ursidae)	<i>Ailuropoda</i> (Ursidae)	(2)	mtDNA restriction site analysis
Baryshnikov and Averianov (1992)*		Procyonidae	(1)	Morphology of deciduous dentition
Hashimoto et al. (1993)*	Ursidae	Ursidae	(2)	Globin sequence
Wolsan (1993)*		Procyonidae (extended)	(1)	Skull and dental morphology
Wozencraft (1993)*	<i>Ailuurus</i> (Ursidae)	<i>Ailuropoda</i> (Ursidae)	(3)	Review of carnivores
Wyss and Flynn (1993)*		Ursidae (extended)	(1)	Morphology
Zhang and Ryder (1993)*	Ursidae	Unresolved	(2)	mtDNA sequence analysis
Vrana et al. (1994)*	Ursidae	Ursidae (extended)	(3)	Total evidence of mtDNA and morphology
Zhang and Ryder (1994)*	Ursidae	Procyonidae	(2)	mtDNA sequence analysis
Lento et al. (1995)*		Unresolved	(2)	Spectral analysis of mtDNA sequence data
Pecon Slattery and O'Brien (1995)*	Ursidae	Procyonidae	(2)	mtDNA; protein electrophoresis
Ledje and Arnason (1996a)*	Ursidae	Unresolved	(2)	Cytochrome <i>b</i> sequence analysis
Ledje and Arnason (1996b)*	Ursidae	Unresolved	(2)	12S rDNA sequence analysis
Talbot and Shields (1996)*	Ursidae		(2)	mtDNA sequence analysis
Lin et al. (1997)	Ursidae		(2)	RAPD DNA hybridization
Wang (1997)*		Procyonidae	(1)	Skull and dental morphology
Flynn and Nedbal (1998)*	Ursidae	Procyonidae (extended)	(3)	Total evidence of morphology and DNA sequences
Lan and Wang (1998)*	Ursidae	Procyonidae	(2)	RFLP analysis of rDNA
Schreiber et al. (1998)*		Ailuridae	(2)	Comparative determinant analysis (immunology)
Waitis et al. (1999)	Ursidae		(2)	mtDNA sequence analysis

NOTES: A statement such as "*Ailuurus* (Ursidae)" means that *Ailuurus* was held to be the sister taxon to *Ailuropoda* with ursids forming a sister group to both. The term "extended" means that the group listed was the closest sister group between ursids and procyonids to the panda species; however, the panda species had an even closer sister group relationship with some other carnivore taxon. For data source: (1), morphological; (2), molecular; (3), both morphological and molecular (total evidence). Studies marked with an asterisk provided source trees for the supertree analyses.

TABLE 1.3

Number of Studies Providing Statements of Phylogenetic Affinity for *Ailuropoda* and *Ailurus*, or Providing Source Trees for the Supertree Analysis

	PHYLOGENETIC AFFINITY	SUPERTREE ANALYSIS
<i>Ailuropoda</i>	90	71
<i>Ailurus</i>	79	76
Either panda species	105	80
Both panda species	72	64
Total	105	116

SOURCES: Thirty-six source trees that do not mention either *Ailuropoda* or *Ailurus* were included in the supertree analysis to give a better estimate of the family level relationships within Carnivora. Additional source trees were obtained from Gregory and Hellman (1939), Sarich (1969a,b), Seal et al. (1970), Hunt (1974), Radinsky (1975), Tedford (1976), Arnason (1977), Hendeby (1978), Ling (1978), Schmidt-Kittler (1981), Dutrillaux et al. (1982), Flynn and Galiano (1982), Goodman et al. (1982), De Jong (1986), Wyss (1987), Holmes (1988), Rodewald et al. (1988), Ahmed et al. (1990), Nojima (1990), McKenna (1991), Janczewski et al. (1992), Arnason and Ledje (1993), Garland et al. (1993), Hunt and Tedford (1993), Veron and Catzeflis (1993), Berta and Wyss (1994), Hunt and Barnes (1994), Masuda and Yoshida (1994), Slade et al. (1994), Arnason et al. (1995), Austin (1996), Bininda-Emonds and Russell (1996), Werdelin (1996), and Ortolani (1999).

In contrast, MRP can combine phylogenetic information from any study, be it in the form of a tree or a simple statement, by coding it as a series of binary elements. These elements are then combined into a single matrix that is analyzed using parsimony to derive a tree that best summarizes the hierarchical information in the set of source trees. Briefly, each node from every source tree is coded in turn as follows: if a given species is descended from that node, it is scored as 1; if it is not, it is scored as 0. Species that are not present in a particular study, but are present in others, are scored as ? for that particular study (figure 1.1) (Sanderson et al. 1998; Bininda-Emonds 2000b). In this way, supertree construction can combine studies examining different sets of species. Simulation studies show that MRP is as accurate as total evidence in cases in which both methods can be applied (Bininda-Emonds and Sanderson 2001).

Matrix representations for all source trees were constructed by eye. Supertree analysis used PAUP\* version 4.ob2 (Swofford 1999). Searches always used the exact branch-and-bound algorithm, thereby guaranteeing that all of the most parsimonious solutions for the data were found.

The supertree was the strict consensus of all equally most parsimonious solutions. Differential support for the relationships within a supertree was quantified using the Bremer decay index (Bremer 1988; Källersjö et al. 1992), because the bootstrap is inappropriate due to character nonindependence (Purvis 1995). The Bremer decay index measures the number of additional steps over the most optimal length before a node of interest is contradicted. Nodes that remain in the strict consensus solution of increasingly suboptimal trees are not readily contradicted and are therefore inferred to have more support.

#### SLIDING WINDOW ANALYSIS

To view changes in phylogenetic opinion over time, I employed a sliding window approach to time series analysis. Specifically, the data sources were arranged in ascending chronological order and secondarily by author name in ascending alphabetical order. Contiguous, overlapping sets of data sources (e.g., sources 1–10, 2–11, 3–12) were then analyzed.

For statements of phylogenetic affinity, I calculated the average value of the affinity metric

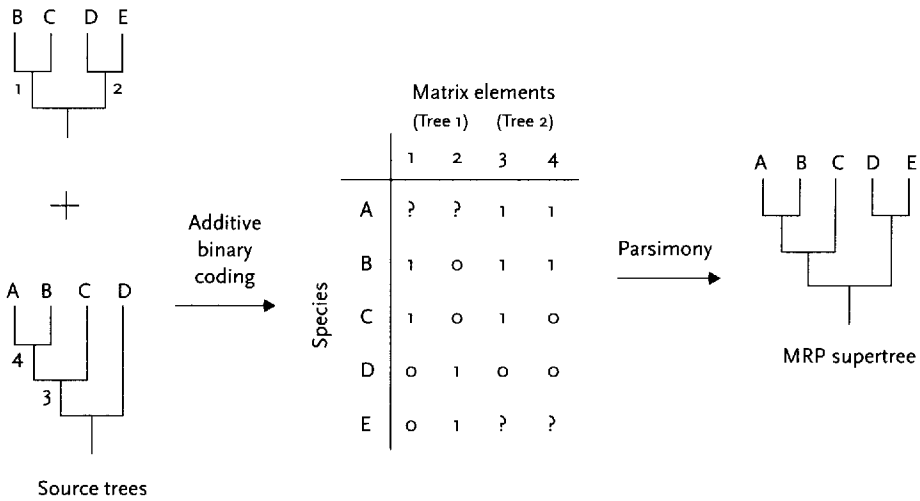


FIGURE 1.1. Basic procedure of supertree construction using matrix representation with parsimony (MRP).

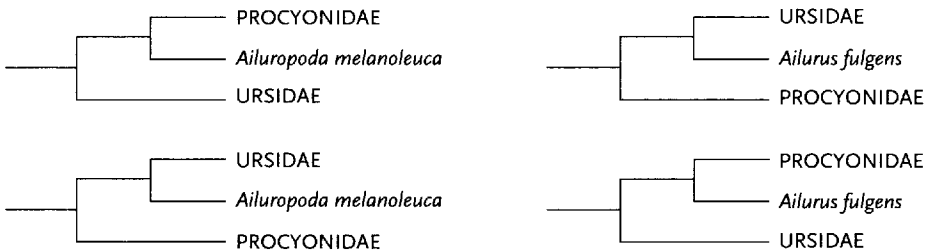


FIGURE 1.2. Backbone constraint trees used for the supertree analyses in PAUP\*, forcing *Ailuropoda* or *Ailurus* into a sister group relationship with either ursids or procyonids.

for windows that were either five or ten studies in size. The overall consensus opinion at any given point in time was also obtained from the cumulative average of the affinity metric for all studies thus far included.

For the supertree analyses, the window size was fifteen studies. I used the affinity metric to summarize the placement of both *Ailuropoda* and *Ailurus* in the supertree of each window. I also examined the support for these inferred placements by using backbone constraint trees (see Swofford 1999) to force PAUP\* to search only for solutions in which each panda species was more closely related to ursids than to procyonids and vice versa (figure 1.2). Support for these alternative placements was quantified by how much less parsimonious they were than

the optimal length for that window. Unlike the Bremer decay index, higher values in this case indicate decreasing support for the constrained placement.

## RESULTS

### TYPES OF EVIDENCE

Unsurprisingly, morphological evidence dominates until the late 1970s (see table 1.2). Thereafter, molecular data come to bear increasingly on the question of panda relationships, either alone or in concert with morphological evidence (total evidence). From the late 1980s, the phylogenetic placement of either *Ailuropoda* or *Ailurus* has been examined using molecular data almost exclusively. Behavioral information has

TABLE 1.4  
*Summary of Statements of Phylogenetic Affinity for Ailuropoda and Ailurus*

SISTER GROUP	NUMBER OF STUDIES	
	<i>AILUROPODA</i>	<i>AILURUS</i>
Ursidae	57	12
Other panda species within Ursidae	4	4
Total	61	16
Procyonidae	11	41
Other panda species within Procyonidae	7	7
Total	18	48
Other panda species	3	3
Other panda species within Ursidae or Procyonidae	11	11
Total	14	14
Unresolved or other	8	4

only been used sporadically throughout the survey period.

#### STATEMENTS OF PHYLOGENETIC AFFINITY

Taken together, all statements of phylogenetic affinity strongly place *Ailuropoda* and *Ailurus* within separate carnivore families (table 1.4). Roughly two-thirds of the ninety studies mentioning *Ailuropoda* cluster it with ursids, whereas a slightly smaller fraction of the seventy-nine studies for *Ailurus* place it with procyonids. The two panda species were held to be one another's closest relative only fourteen times, and usually within either Ursidae or Procyonidae. These observations are captured by the affinity metric. Over all studies, *Ailuropoda* possesses a value of 0.48, whereas *Ailurus* shows a value of -0.41.

The sliding window analysis demonstrates that these overall opinions are largely reflected in any time window since 1869 (figure 1.3). The trends are roughly identical for windows of either five or ten studies in size, although the former unsurprisingly displayed slightly greater fluctuations. Except for two occasions, *Ailuropoda* is always inferred to be more closely related

to ursids on average. This is especially true from the late 1980s on, when all windows unequivocally indicate *Ailuropoda* to be a member of the Ursidae. Procyonid or uncertain affinities for *Ailuropoda* are only obtained sporadically across a relatively broad period from the 1940s to the mid-1970s, and a single instance around the mid-1980s. *Ailurus* is usually firmly held to have procyonid affinities, although the windows tend toward 0 (i.e., unresolved or other affinities) with time. In the 1990s, many windows indicate *Ailurus* to have ursid affinities. However, the most recent windows again cluster *Ailurus* more closely with procyonids.

These same trends are also evident when statements of phylogenetic affinity are viewed cumulatively (figure 1.4). Even during an initial period of uncertainty (marked by large fluctuations), the weight of all opinion up to a given time almost always has *Ailuropoda* more closely related to ursids than to procyonids. Moreover, this opinion is generally strengthening with time, particularly from the mid-1980s, as the line moves to more positive values. In contrast, *Ailurus* is always held as being more closely related

A



B

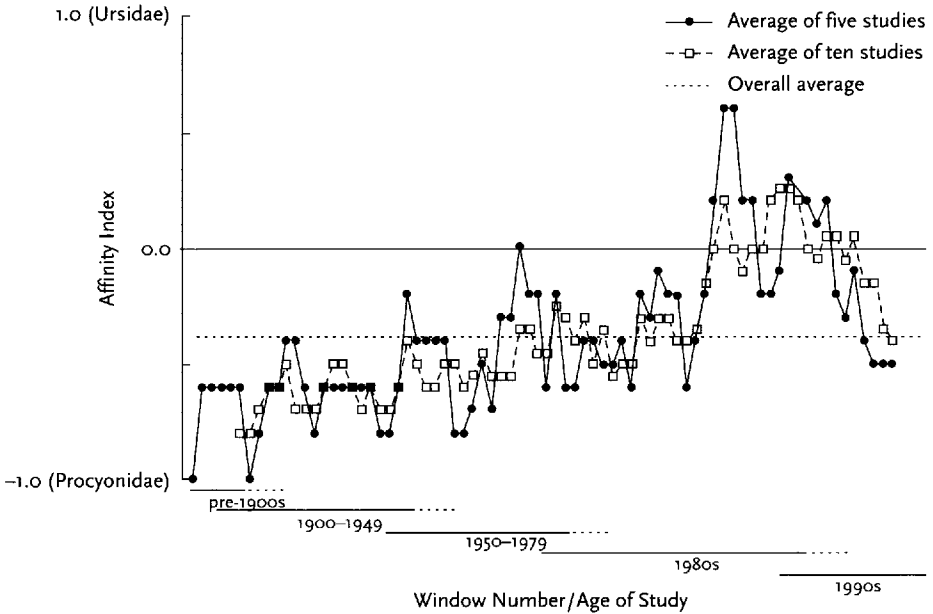


FIGURE 1.3. Sliding window analysis of statements of phylogenetic affinity for (A) *Ailuropoda* and (B) *Ailurus*, using the affinity metric discussed in the text. Approximate time spans of the windows are given on the x-axis. The dotted extensions apply to the windows of ten studies only. The overall averages for all studies were 0.48 for *Ailuropoda* and -0.41 for *Ailurus*.

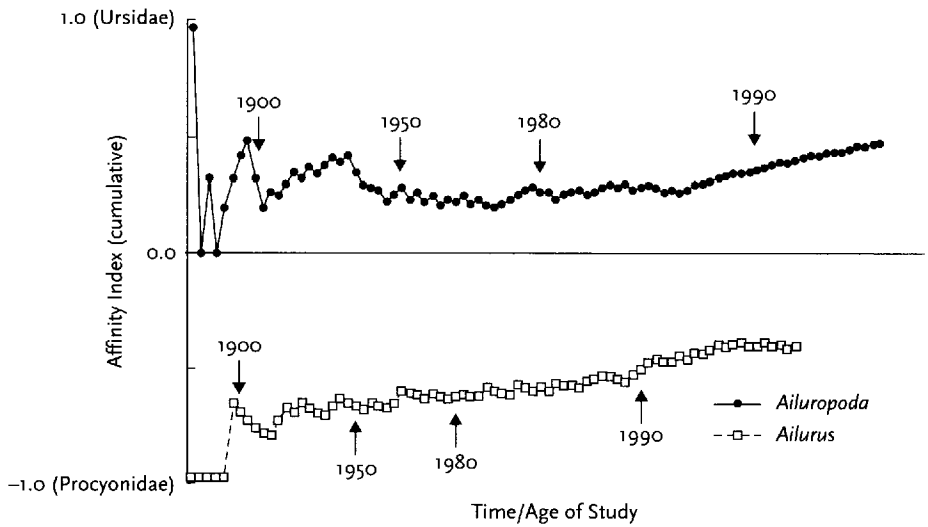


FIGURE 1.4. Cumulative values of statements of phylogenetic affinity for *Ailuropoda* or *Ailurus* using the affinity metric discussed in the text.

to procyonids. Again, this placement is becoming slightly more uncertain with time, as the line tends toward less negative values.

#### SUPERTREE ANALYSIS

The sliding window analysis of consensus super-trees, in which the positions of the panda species were put in the context of higher-level carnivore relationships, largely identified the same trends as noted above (figure 1.5). The only area of disagreement exists before 1950. During this period, both panda species show identical placements, either (1) not distinctly related to either ursids or procyonids or (2) as the sister taxon to procyonids plus some other carnivore taxon. Although this disagreement mirrors the sliding window analysis of phylogenetic statements for *Ailuropoda*, it weakly contradicts the analogous findings during this time that held *Ailurus* to be more closely related to procyonids (see figure 1.3B; but see below). After the 1950s, super-trees in virtually every window place *Ailuropoda* as the sister group to ursids. *Ailurus* meanwhile is usually clustered with procyonids, except for periods in the 1980s and 1990s, when it clusters distantly with ursids or its placement is equivocal

between ursids and procyonids. On the whole, 81.0% of the windows in figure 1.5 placed *Ailuropoda* more closely with ursids, whereas 81.9% placed *Ailurus* more closely with procyonids.

Support for an ursid versus procyonid relationship for each panda species is given in figure 1.6. For *Ailuropoda*, an ursid affinity is usually the more parsimonious solution, particularly from the mid-1980s onward. A sister group relationship with procyonids is more parsimonious only before 1950 and for a brief time during the mid-1980s. The reverse is true for *Ailurus*: a procyonid affinity is usually the more parsimonious. This includes the period before 1950, indicating that *Ailurus* also clusters equally parsimoniously with other nonursid carnivore groups to produce the unresolved result seen in figure 1.5. It is only during the late 1980s to mid-1990s that an *Ailurus*-ursid pairing is the more parsimonious. The placement of *Ailurus* is also generally more uncertain than that of *Ailuropoda*. The difference in the length of the competing topologies for *Ailurus* (maximum = 7.9%) is typically much less than those for *Ailuropoda* (maximum = 14.8%), revealing that placements of *Ailurus* are not as strongly supported. Moreover, whereas

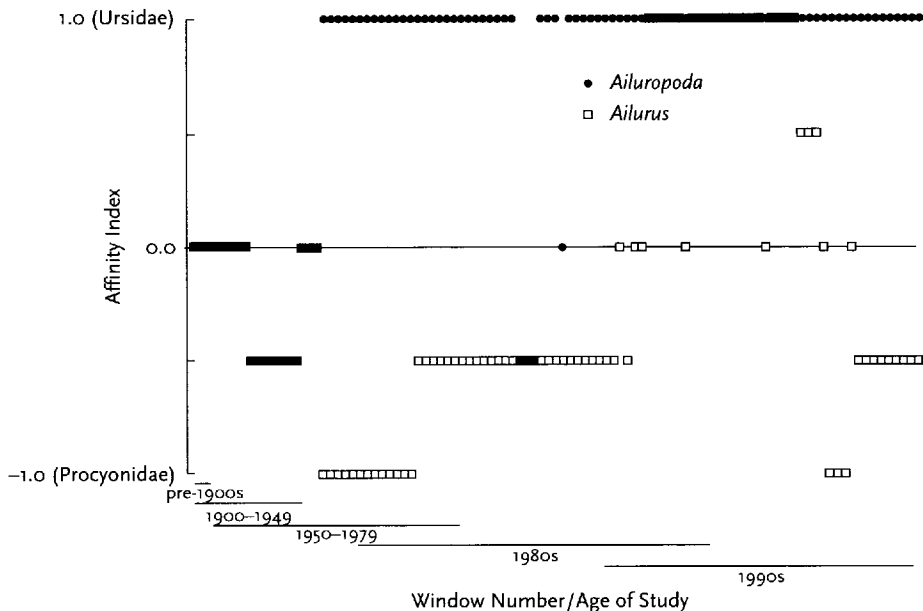


FIGURE 1.5. Sliding window analysis of supertrees to examine the inferred sister groups of *Ailuropoda* and *Ailurus*, as quantified using the affinity metric discussed in the text.

the length difference is increasing for *Ailuropoda* with time (indicating increasing certainty), it is decreasing slightly for *Ailurus*.

The supertree obtained from all 116 source trees is completely resolved (figure 1.7). The high values for the goodness-of-fit measures the consistency index (CI), the retention index (RI), and the rescaled consistency index (RC) (see Farris 1989) indicate generally good agreement among the source trees. There is strong support for a sister group relationship between *Ailuropoda* and ursids. *Ailurus* clusters with procyonids, but this is comparatively weakly supported. Supertrees obtained for each of the major data sources used (morphological, molecular, and total evidence; figure 1.8) also place *Ailuropoda* with ursids. Again, support for this placement is strong, but comparatively higher for the molecular and total evidence supertrees. The different data sources indicate different affinities for *Ailurus*: as the sister group to procyonids (morphological) or musteloids (mustelids plus procyonids; molecular), or unresolved within arctoids (total evidence). Except for the morphological super-

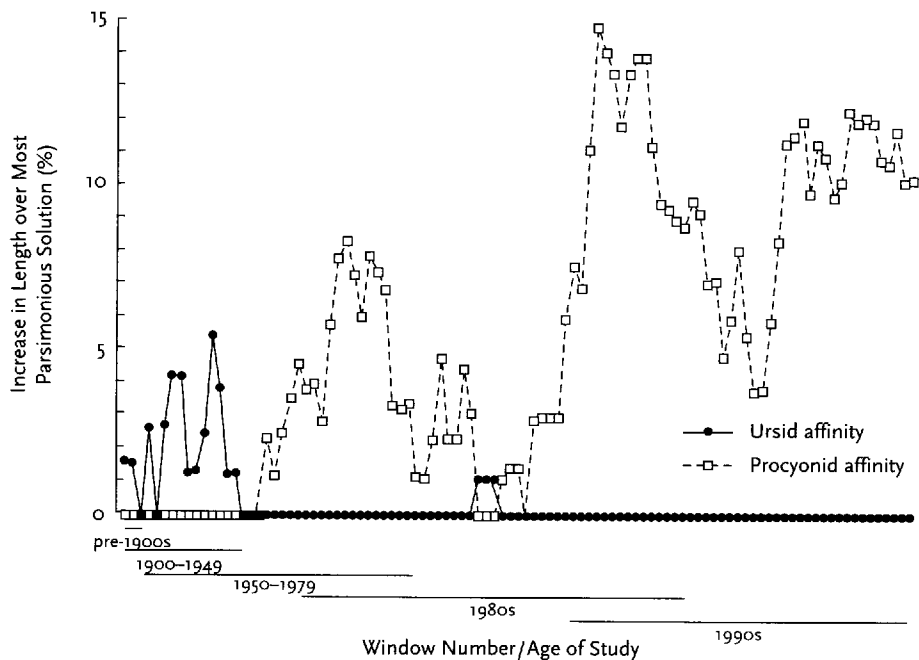
tree, support for each placement is comparatively weak within each supertree.

## DISCUSSION

Despite being one of the most celebrated cases of controversy in mammalian systematics, virtually all lines of evidence hold *Ailuropoda* to be more closely related to ursids than it is to procyonids. Moreover, such a placement is favored relatively consistently through time and by each of morphological and behavioral (i.e., phenotypic), molecular, and total evidence studies. This arrangement enjoys strong support at most times and has not been contradicted since the mid-1980s. Little doubt should now remain that *Ailuropoda* is the sister group to the true bears.

Instead, despite receiving much less attention due to a greater apparent consensus, it is the position of *Ailurus* within carnivores that is much more doubtful. Although it is usually held to have procyonid affinities at any given period since 1869, the strength of this inference is comparatively weak and perhaps decreasing with

A



B

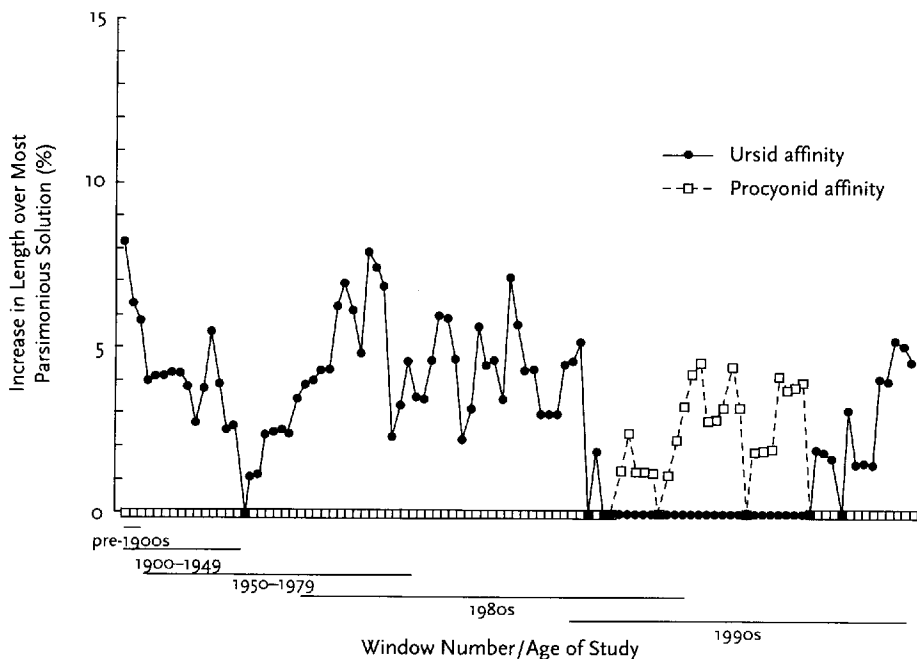


FIGURE 1.6. Sliding window analysis of the relative increase in length over the most parsimonious solution for that window when (A) *Ailuropoda* or (B) *Ailurus* are constrained to have either ursid or procyonid affinities in the supertree analysis (see figure 1.2). Higher values indicate decreasing support for the constrained placement.



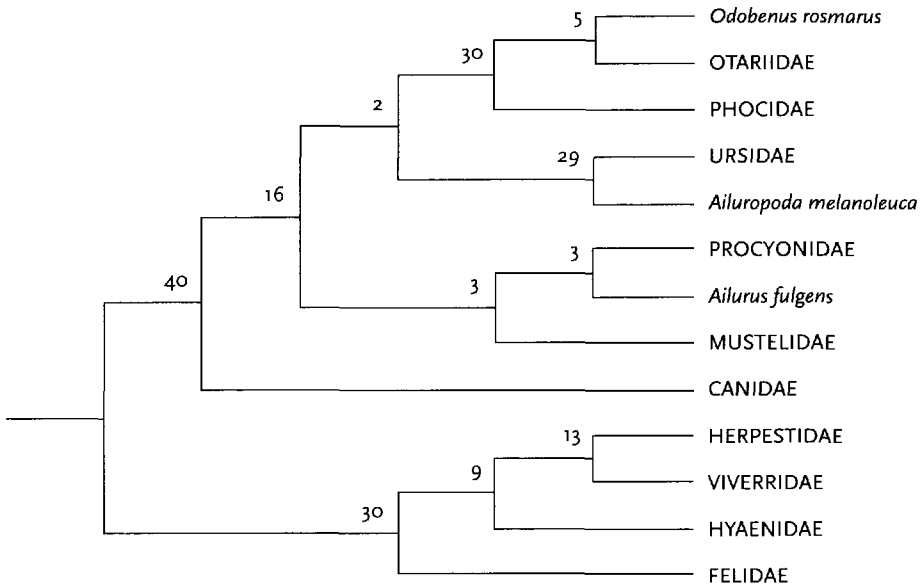


FIGURE 1.7. Overall supertree of family level relationships within Carnivora, as determined from 116 source trees spanning the years 1870 to 1999 inclusive. The single most parsimonious solution had a length of 614 steps, CI = 0.681, RI = 0.749, and RC = 0.510. Support throughout the supertree is given above each branch in the form of Bremer decay indices. Higher values indicate increasing support.

time. Only morphological studies provide reasonable support for this arrangement. Instead, several recent, mostly molecular studies propose an ursid affinity for *Ailurus* and many others are equivocal on the matter (see table 1.2). As such, the position of *Ailurus* is perhaps less clear now than at any time in the past. Much of this may derive from other evidence that indicates *Ailurus* to be the last surviving member of a relatively ancient lineage, one that may extend close to the origins of the major arctoid lineages (Sarich 1976; O'Brien et al. 1985; Bininda-Emonds et al. 1999). Compounded with evidence of a rapid adaptive radiation around this time (Bininda-Emonds et al. 1999), it has proved extremely difficult to resolve the position of *Ailurus* with any certainty or consistency. Much more research effort, using a wide variety of data types, is required.

Of the alternative evolutionary scenarios mentioned earlier, *Ailuropoda* should be viewed as a bear adapted to a herbivorous diet (as are *Helarctos*, *Tremarctos*, and *Ursus thibetanus*) rather than a small herbivore that has converged on a larger ursid body plan (cf. Davis 1964). Features shared

with the herbivorous procyonids, such as an enlarged dentition, are therefore instances of convergence, possibly facilitated by both lineages being derived from the same arctoid body plan.

Likewise, the apparent procyonid affinities of *Ailurus* mean that derived features shared by the two panda species (perhaps including the common name “panda”) (see Mayr 1986) should be viewed as convergent. However, a definitive statement in this regard is not possible, given the uncertain position of *Ailurus*. If *Ailurus* does have ursid affinities, as suggested by several recent studies, then its similarities with *Ailuropoda* would cease to be convergent, although they might still be primitive.

I refrain from making any taxonomic conclusions in this chapter, even for *Ailuropoda*, for which the phylogenetic position seems reasonably secure. Although conservation decisions and priorities can be based on taxonomic information (e.g., Lockwood 1999; see also May 1990; Vane-Wright et al. 1991), such information is often only a crude approximation to the phylogenetic history of a group. Furthermore, taxonomic

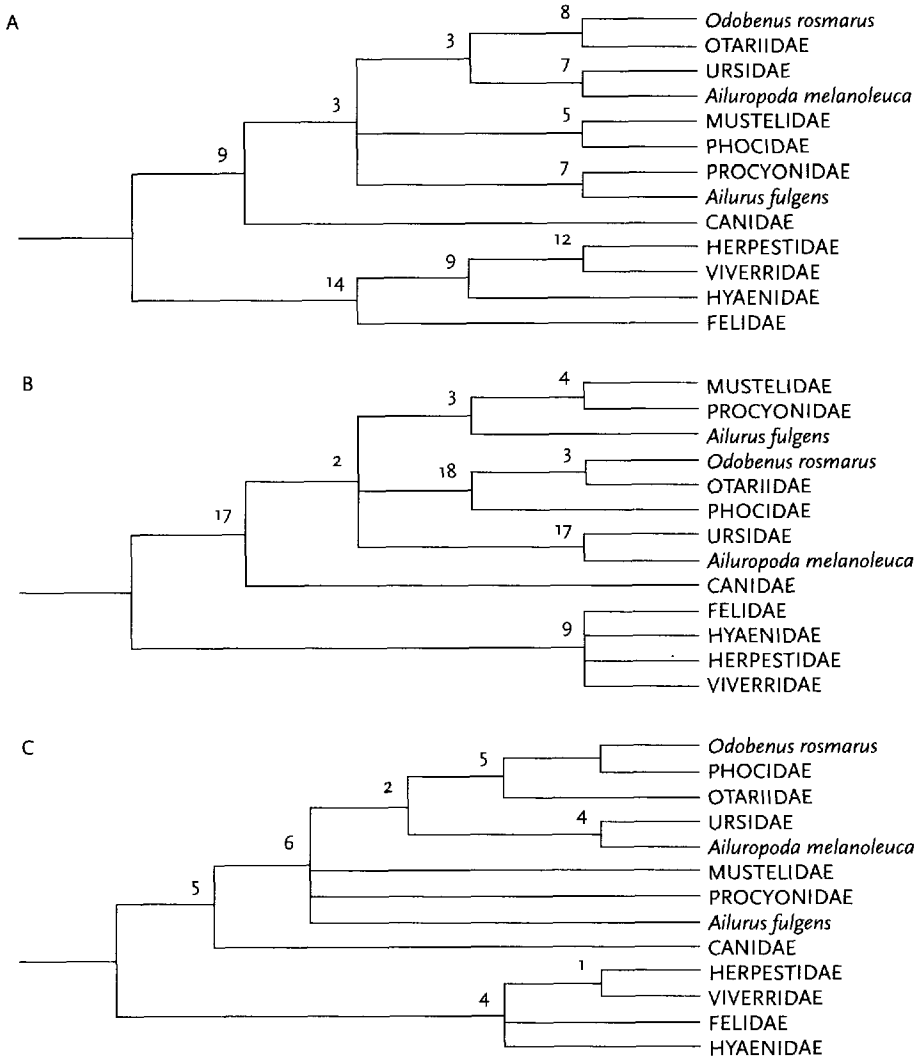


FIGURE 1.8. Supertrees of family level relationships within Carnivora, as determined from source trees derived from (A) morphological ( $N = 2$ , length = 287, CI = 0.662, RI = 0.734; RC = 0.486), (B) molecular ( $N = 6$ , length = 241, CI = 0.718, RI = 0.764; RC = 0.548), or (C) total evidence ( $N = 4$ , length = 74, CI = 0.757, RI = 0.861; RC = 0.651) data. Support throughout each supertree is given above each branch in the form of Bremer decay indices.

assessments are subjective and can frequently obscure or even misrepresent phylogenetic information. For instance, by placing *Ailuropoda* in its own family (Ailuropodidae), we gain the knowledge that it is (subjectively) “distinct” at the cost of realizing its close relationship and therefore similarity with ursids. Although the former piece of information is an important factor in establishing conservation priorities, the latter is critical for conservation practice. In

managing *Ailuropoda*, we will likely have greater success by adapting existing ursid conservation programs because of key similarities between all the species (e.g., the slow reproductive rate and associated life history traits) (see Garshelis, chapter 4). Instead, we would be better served by using the more resolved and accurate phylogenetic information whenever possible (Crozier 1997; Nee and May 1997; Vázquez and Gittleman 1998). Conservation priorities can be set using

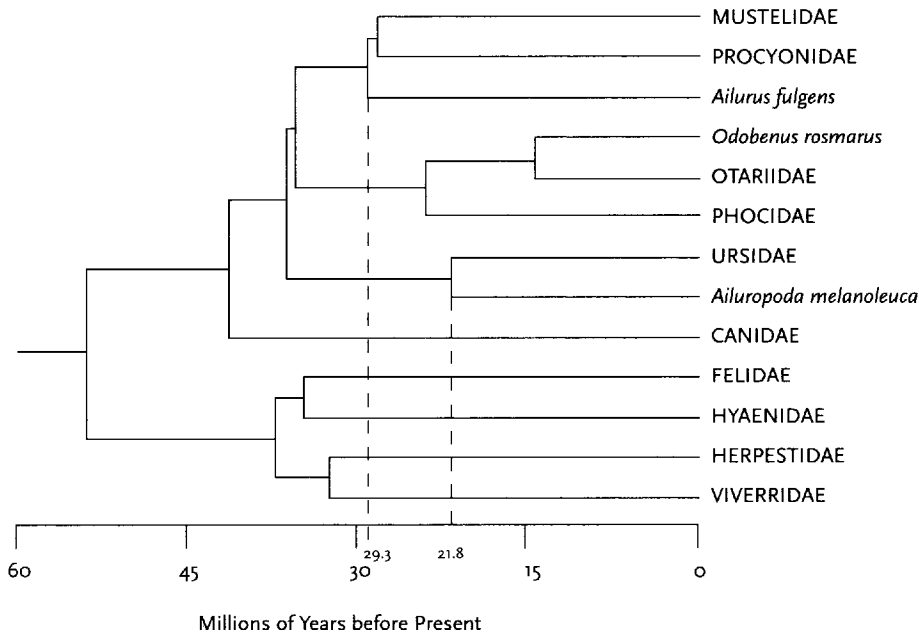


FIGURE 1.9. Best estimate of the relationships of *Ailuropoda* and *Ailurus*, together with times of divergence. Adapted from Bininda-Emonds et al. (1999).

metrics that quantify phylogenetic diversity or distinctiveness from phylogenies with branch length information (e.g., Faith 1994; Crozier 1997). In this regard, both *Ailuropoda* and *Ailurus* would be regarded as worthy of conservation, because they represent the sole surviving members of relatively ancient lineages. This can be clearly seen from figure 1.9, which contains what I think to be the best current estimate of higher-level relationships and divergence times within the carnivores. Based on both fossil and molecular data, the lineage giving rise to *Ailurus* probably diverged from the common ancestor of mustelids and procyonids about 29.3 million years before present, whereas the lineage for *Ailuropoda* separated from that leading to the true ursids about 21.8 million years before present (Bininda-Emonds et al. 1999).

#### ACKNOWLEDGMENTS

I thank Lee Hagey and Don Lindburg for the opportunity to speak at the Phylogeny and Conservation session of *Panda 2000*, and John Gittle-

man for his support and encouragement. Steve O'Brien kindly supplied copies of some otherwise difficult to obtain source studies. Financial support for this study was provided by both *Panda 2000* and a Natural Sciences and Engineering Research Council of Canada postdoctoral fellowship.

#### REFERENCES

- Ahmed, A., M. Jahan, and G. Braunitzer. 1990. Carnivora: The primary structure of hemoglobin from adult coati (*Nasua nasua rufa*, Procyonidae). *J Protein Chem* 9:23-29.
- Arnason, U. 1977. The relationship between the four principal pinniped karyotypes. *Hereditas* 87: 227-42.
- Arnason, U., and C. Ledje. 1993. The use of highly repetitive DNA for resolving cetacean and pinniped phylogenies. In *Mammalian phylogeny: Placentals*, edited by F. S. Szalay, M. J. Novacek, and M. C. McKenna, pp. 74-80. New York: Springer-Verlag.
- Arnason, U., K. Bodin, A. Gullberg, C. Ledje, and S. Mouchaty. 1995. A molecular view of pinniped relationships with particular emphasis on the true seals. *J Mol Evol* 40:78-85.

- Austin, P. K. 1996. Systematic relationships of the Herpestidae (Mammalia: Carnivora). M.Sc. thesis. University of Illinois, Chicago.
- Bardenfleth, K. S. 1914. On the systematic position of *Ailuropus melanoleucus*. *Mindeskriфт Japetus Steenstrup Fødsel* 17:1-15.
- Baryshnikov, G. F., and A. O. Averianov. 1992. Deciduous teeth of carnivorous mammals (order Carnivora) part III. The family Procyonidae. *Trudy Zool Inst* 246:103-28.
- Baum, B. R. 1992. Combining trees as a way of combining data sets for phylogenetic inference, and the desirability of combining gene trees. *Taxon* 41: 3-10.
- Beddard, F. E. 1902. *Mammalia*. London: Macmillan and Company.
- Berta, A., and A. R. Wyss. 1994. Pinniped phylogeny. In *Contributions in marine mammal paleontology honoring Frank C. Whitmore, Jr.*, edited by A. Berta and T. A. Deméré. *Proc San Diego Soc Nat Hist* 29: 33-56.
- Bininda-Emonds, O. R. P. 2000a. Factors influencing phylogenetic inference: A case study using the mammalian carnivores. *Mol Phylogenet Evol* 16: 113-26.
- Bininda-Emonds, O. R. P. 2000b. Systematics: Super-tree reconstruction. In *McGraw-Hill Yearbook of Science and Technology 2001*. New York: McGraw-Hill.
- Bininda-Emonds, O. R. P., and A. P. Russell. 1996. A morphological perspective on the phylogenetic relationships of the extant phocid seals (Mammalia: Carnivora: Phocidae). *Bonn Zool Monogr* 41:1-256.
- Bininda-Emonds, O. R. P., and M. J. Sanderson. 2001. Assessment of the accuracy of matrix representation with parsimony supertree construction. *Syst Biol* 50:565-79.
- Bininda-Emonds, O. R. P., J. L. Gittleman, and A. Purvis. 1999. Building large trees by combining phylogenetic information: A complete phylogeny of the extant Carnivora (Mammalia). *Biol Rev* 74:143-75.
- Boule, M., and J. Piveteau. 1935. *Les fossiles. Éléments de Paléontologie*. Paris: Masson.
- Braunitzer, G., and O. Hofmann. 1987. Les hémoglobins des pandas. *C R Séances Soc Biol Fil* 181:116-21.
- Braunitzer, G., A. Stangl, and R. Göldenboth. 1985. Preliminary results of a comparative study on the amino acid sequence of the giant panda (*Ailuropoda melanoleuca*, Carnivora). *Bongo (Berlin)* 10:183-84.
- Bremer, K. 1988. The limits of amino acid sequence data in angiosperm phylogenetic reconstruction. *Evolution* 42:795-803.
- Bugge, J. 1978. The cephalic arterial system in carnivores, with special reference to the systematic classification. *Acta Anat* 101:45-61.
- Cave, A. J. E. 1974. The sacculus epipharyngeus in the giant panda, *Ailuropoda melanoleuca*. *J Zool* 172:123-31.
- Chu, C. 1974. On the systematic position of the giant panda, *Ailuropoda melanoleuca* (David). *Acta Zool Sin* 20:174-87.
- Colbert, E. H. 1955. *Evolution of the vertebrates: A history of the backboneed animals through time*. New York: John Wiley and Sons.
- Couturier, J., and B. Dutrillaux. 1985. Evolution chromosomique chez les Carnivores. *Mammalia* 50A:124-62.
- Crozier, R. H. 1997. Preserving the information content of species: Genetic diversity, phylogeny, and conservation worth. *Annu Rev Ecol Syst* 28: 243-68.
- Czelusniak, J., M. Goodman, B. F. Koop, D. A. Tagle, J. Shoshani, G. Braunitzer, T. K. Kleinschmidt, W. W. de Jong, and G. Matsuda. 1991. Perspectives from amino acid and nucleotide sequences on cladistic relationships among higher taxa of Eutheria. In *Current mammalogy*, edited by H. H. Genoways, pp. 545-72. New York: Plenum.
- Czelusniak, J., M. Goodman, N. D. Moncrief, and S. M. Kehoe. 1990. Maximum parsimony approach to construction of evolutionary trees from aligned homologous sequences. *Methods Enzymol* 183: 601-15.
- David, A. 1869. Extrait d'une lettre du même, datée de la Principauté Thibetaine (independente) de Moupin, le 21 Mars. *Nouv Arch Mus Hist Nat Paris, Bull* 5:12-13.
- Davis, D. D. 1964. The giant panda: A morphological study of evolutionary mechanisms. *Fieldiana Zool Mem* 3:1-339.
- De Carle Sowerby, A. 1932. The pandas or cat-bears. *China J* 17:296-99.
- De Jong, W. W. 1986. Protein sequence evidence for monophyly of the carnivore families Procyonidae and Mustelidae. *Mol Biol Evol* 3:276-81.
- De Jong, W. W. 1998. Molecules remodel the mammalian tree. *Trends Ecol Evol* 13:270-75.
- De Ridder, M. 1979. De systematische plaats der panda's (Mammalia: Carnivora fissipedia). *Natuurwet Tijdschr* 61:163-73.
- Dutrillaux, B., J. Couturier, and G. Chauvier. 1982. Notes et discussions sur "Édentés," Carnivores, "Pinnipèdes" et leurs parasites. 3. Les Pinnipèdes, monophylétiques, sont issus de Procyonidae ancestraux, et non d'Ursidae ni de Mustelidae. *Mém Mus Natl Hist Nat Sér A Zool* 123:141-43.
- Dziurdzik, B., and M. Nowogrodzka-Zagórska. 1991. The histological structure of hairs of the giant panda, *Ailuropoda melanoleuca* (David, 1869), and the lesser panda, *Ailurus fulgens* (F. Cuvier, 1825),

- and the systematic position of these species. *Acta Zool Cracov* 34:463-74.
- Eisenberg, J. F. 1981. *The mammalian radiations: An analysis of trends in evolution, adaptation, and behavior*. Chicago: University of Chicago Press.
- Eisentraut, M. 1985. The pattern of ridges in the hard palate in procyonids and bears. *Bongo (Berlin)* 10: 185-96.
- Erdbrink, D. P. 1953. *A review of fossil and recent bears of the Old World, with remarks on their phylogeny, based upon their dentition*. Deventer: Jan de Lange.
- Ewer, R. F. 1973. *The carnivores*. Ithaca: Cornell University Press.
- Faith, D. P. 1994. Phylogenetic diversity: A general framework for the prediction of feature diversity. In *Systematics and conservation evaluation*, edited by P. L. Forey, C. J. Humphries, and R. I. Vane-Wright, pp. 251-268. Oxford: Oxford University Press.
- Farris, J. S. 1983. The logical basis of phylogenetic analysis. In *Advances in cladistics*, edited by N. I. Platnick and V. A. Funk, pp. 7-36. New York: Columbia University Press.
- Farris, J. S. 1989. The retention index and the rescaled consistency index. *Cladistics* 5:417-19.
- Feng, W., C. Luo, Z. Ye, A. Zhang, and G. He. 1985. The electrophoresis comparison of serum protein and LDH isoenzyme in 5 Carnivora animals—giant panda, red panda, Asiatic black bear, cat and dog. *Acta Theriol Sin* 5:151-56.
- Feng, W., C. Luo, Z. Ye, A. Zhang, and G. He. 1991. The electrophoresis comparison of serum protein and LDH isoenzyme in 5 Carnivora animals—giant panda, red panda, Asiatic black bear, cat and dog. *Sichuan Daxue Xuebao* 28:155-60.
- Flower, W. H., and R. Lydekker. 1891. *An introduction to the study of mammals living and extinct*. London: Adam and Charles Black.
- Flynn, J. J., and H. Galiano. 1982. Phylogeny of the early Tertiary Carnivora, with a description of a new species of *Protictis* from the middle Eocene of northwestern Wyoming. *Am Mus Novit* 2725: 1-64.
- Flynn, J. J., and M. A. Nedbal. 1998. Phylogeny of the Carnivora (Mammalia): Congruence vs incompatibility among multiple data sets. *Mol Phylogenet Evol* 9:414-26.
- Flynn, J. J., N. A. Neff, and R. H. Tedford. 1988. Phylogeny of the Carnivora. In *The phylogeny and classification of the Tetrapods*, edited by M. J. Benton, pp. 73-116. Oxford: Clarendon.
- Garland, T., Jr., A. W. Dickerman, C. M. Janis, and J. A. Jones. 1993. Phylogenetic analysis of covariance by computer simulation. *Syst Biol* 42: 265-92.
- Gervais, P. 1870. Mémoire sur les formes cérébrales propres aux carnivores vivants et fossiles suivi de remarques sur la classification de ces animaux. *Nouv Arch Mus Hist Nat Paris* 1:103-62.
- Ginsburg, L. 1982. Sur la position systématique du petit panda, *Ailurus fulgens* (Carnivora, Mammalia). *Géobios Mém Spéc* 6:247-58.
- Goldman, D., P. R. Giri, and S. J. O'Brien. 1989. Molecular genetic-distance estimates among the Ursidae as indicated by one- and two-dimensional protein electrophoresis. *Evolution* 43:282-95.
- Goodman, M., A. E. Romero-Herrera, H. Dene, J. Czelusniak, and R. E. Tashian. 1982. Amino acid sequence evidence on the phylogeny of primates and other eutherians. In *Macromolecular sequences in systematics and evolutionary biology*, edited by M. Goodman, pp. 115-191. New York: Plenum.
- Gregory, W. K. 1936. On the phylogenetic relationships of the giant panda (*Ailuropoda*). *Am Mus Novit* 878:1-29.
- Gregory, W. K., and M. Hellman. 1939. On the evolution and major classification of the civets (Viverridae) and allied fossil and recent Carnivora: A phylogenetic study of the skull and dentition. *Proc Am Philos Soc* 81:309-92.
- Hashimoto, T., E. Otaka, J. Adachi, K. Mizuta, and M. Hasegawa. 1993. The giant panda is closer to a bear, judged by  $\alpha$ - and  $\beta$ -hemoglobin sequences. *J Mol Evol* 36:282-89.
- Hendey, Q. B. 1972. A Pliocene ursid from South Africa. *Ann S Afr Mus* 59:115-32.
- Hendey, Q. B. 1978. Late Tertiary Hyaenidae from Langebaanweg, South Africa, and their relevance to the phylogeny of the family. *Ann S Afr Mus* 76: 265-97.
- Hendey, Q. B. 1980. Origin of the giant panda. *S Afr J Sci* 76:179-80.
- Hennig, W. 1966. *Phylogenetic systematics*. Urbana: University of Illinois Press.
- Hofmann, O., and G. Braunitzer. 1987. The primary structure of the hemoglobin of spectacled bear (*Tremarctos ornatus*, Carnivora). *Biol Chem Hoppe-Seyler* 368:949-54.
- Holmes, T., Jr. 1988. Sexual dimorphism in North American weasels with a phylogeny of the Mustelidae. Ph.D. dissertation. University of Kansas, Lawrence.
- Honacki, J. H., K. E. Kinman, and J. W. Koepl, eds. 1982. *Mammal species of the world: A taxonomic and geographic reference*. Lawrence: Allen Press and the Association of Systematics Collections.
- Hunt, R. M., Jr. 1974. The auditory bulla in Carnivora: An anatomical basis for reappraisal of carnivore evolution. *J Morphol* 143:21-76.

- Hunt, R. M., Jr., and L. G. Barnes. 1994. Basicranial evidence for ursid affinity of the oldest pinnipeds. In *Contributions in marine mammal paleontology honoring Frank C. Whitmore, Jr.*, edited by A. Berta and T. A. Deméré. *Proc San Diego Soc Nat Hist* 29: 57-67.
- Hunt, R. M., Jr., and R. H. Tedford. 1993. Phylogenetic relationships within the aeluroid Carnivora and implications of their temporal and geographic distribution. In *Mammalian phylogeny: Placentals*, edited by F. S. Szalay, M. J. Novacek, and M. C. McKenna, pp. 53-73. New York: Springer-Verlag.
- Janczewski, D. N., N. Yuhki, D. A. Gilbert, G. T. Jefferson, and S. J. O'Brien. 1992. Molecular phylogenetic inference from saber-toothed cat fossils of Rancho La Brea. *Proc Natl Acad Sci USA* 89: 9769-73.
- Källersjö, M., J. S. Farris, A. G. Kluge, and C. Bult. 1992. Skewness and permutation. *Cladistics* 8: 275-87.
- Kamiya, T., and P. Pirlot. 1988. The brain of the lesser panda *Ailurus fulgens*: A quantitative approach. *Zool Syst Evolutionsforsch* 26:65-72.
- Kidd, W. 1904. On the arrangement of the hair on the nasal region of the parti-coloured bear (*Aeluropus melanoleucus*). *Proc Zool Soc Lond* 1904:373.
- Kluge, A. G. 1989. A concern for evidence and a phylogenetic hypothesis of relationships among *Epicrates* (Boidae, Serpentes). *Syst Zool* 38:7-25.
- Kretzoi, M. 1945. Bemerkungen über das Raubtier-system. *Ann Hist Natur Musei Natl Hungar* 38: 59-83.
- Kretzoi, N. 1971. Kritische Bemerkungen zur Abstammung der Ursiden. *Vertebrata Hungar* 12:123-32.
- Lan, H., and W. Wang. 1998. Phylogenetic relationships among giant panda and related species based on restriction site variations in rDNA spacers. *Zool Res* 19:337-43.
- Lankester, E. R. 1901. On the affinities of *Aeluropus melanoleucus*, A. Milne-Edwards. *Trans Linn Soc Lond, Zool* 8:163-65.
- Ledje, C., and U. Arnason. 1996a. Phylogenetic analyses of complete cytochrome *b* genes of the order Carnivora with particular emphasis on the Caniformia. *J Mol Evol* 42:135-44.
- Ledje, C., and U. Arnason. 1996b. Phylogenetic relationships within caniform carnivores based on analyses of the mitochondrial 12S rRNA gene. *J Mol Evol* 43:641-49.
- Lento, G. M., R. E. Hickson, G. K. Chambers, and D. Penny. 1995. Use of spectral analysis to test hypotheses on the origin of pinnipeds. *Mol Biol Evol* 12:28-52.
- Leone, C. A., and A. L. Wiens. 1956. Comparative serology of carnivores. *J Mammal* 37:11-23.
- Liang, S., and L. Zhang. 1987. A comparison of the primary structures of lactate dehydrogenase isozymes M<sub>4</sub> from giant panda, red panda, black bear and dog. *Sci Sin B (Chem, Biol, Agricult, Med, Earth Sci)* 30:270-82.
- Lin, F., Y. Yang, Y. Zhang, H. Chen, L. Fei, Y. F. Song, G. He, and A. Zhang. 1997. A preliminary study on the taxonomy position of giant panda using RAPD. *Acta Theriol Sin* 17:161-64.
- Ling, J. K. 1978. Pelage characteristics and systematic relationships in the Pinnipedia. *Mammalia* 42: 305-13.
- Lockwood, J. L. 1999. Using taxonomy to predict success among introduced avifauna: Relative importance of transport and establishment. *Conserv Biol* 13:560-67.
- Lydekker, R. 1901. Detailed description of the skull and limb-bones of *Ailuropoda melanoleucus*. *Trans Linn Soc Lond, Zool* 8:166-71.
- Masuda, R., and M. C. Yoshida. 1994. A molecular phylogeny of the family Mustelidae (Mammalia, Carnivora), based on comparison of mitochondrial cytochrome *b* nucleotide sequences. *Zool Sci* 11:605-12.
- Matthew, W. D. 1929. Critical observations upon Siwalik mammals (exclusive of Proboscidea). *Bull Am Mus Nat Hist* 56:437-560.
- Matthew, W. D., and W. Granger. 1923. New fossil mammals from the Pliocene of Sze-Chuan, China. *Bull Am Mus Nat Hist* 48:563-98.
- May, R. M. 1990. Taxonomy as destiny. *Nature* 347: 129-30.
- Mayr, E. 1986. Uncertainty in science: Is the giant panda a bear or a raccoon? *Nature* 323:769-71.
- McKenna, M. C. 1991. The alpha crystallin A chain of the eye lens and mammalian phylogeny. *Ann Zool Fenn* 28:349-60.
- McKenna, M. C., and S. K. Bell. 1997. *Classification of mammals above the species level*. New York: Columbia University Press.
- McLaren, I. A. 1960. Are the Pinnipedia biphyletic? *Syst Zool* 9:18-28.
- Mettler, F. A., and L. J. Goss. 1946. The brain of the giant panda (*Ailuropoda melanoleuca*). *J Comp Neurol* 84:1-9.
- Mickevich, M. F. 1978. Taxonomic congruence. *Syst Zool* 27:143-58.
- Milne-Edwards, A. 1870. Note sur quelques Mammifères du Thibet oriental. *Ann Sci Nat Cinq* 13:1.
- Mitchell, E. D. 1967. Controversy over diphyly in pinnipeds. *Syst Zool* 16:350-51.
- Mivart, St. G. 1885. On the anatomy, classification, and distribution of the Arctoidea. *Proc Zool Soc Lond* 1885:340-404.

- Morris, R., and D. Morris. 1981. *The giant panda*. London: Macmillan.
- Nash, W. G., and S. J. O'Brien. 1987. A comparative chromosome banding analysis of the Ursidae and their relationship to other carnivores. *Cytogenet Cell Genet* 45:206-212.
- Nash, W. G., J. Wienberg, M. A. Ferguson-Smith, J. C. Menninger, and S. J. O'Brien. 1998. Comparative genomics: Tracking chromosome evolution in the family Ursidae using reciprocal chromosome painting. *Cytogenet Cell Genet* 83:182-92.
- Nee, S., and R. M. May. 1997. Extinction and the loss of evolutionary history. *Science* 278:692-95.
- Newnham, R. E., and W. M. Davidson. 1966. Comparative study of the karyotypes of several species in Carnivora including the giant panda (*Ailuropoda melanoleuca*). *Cytogenetics* 5:152-63.
- Nojima, T. 1990. A morphological consideration of the relationships of Pinnipedia to other carnivores based on the bony tentorium and bony falx. *Mar Mamm Sci* 6:54-74.
- Novacek, M. J. 1992. Mammalian phylogeny: Shaking the tree. *Nature* 356:121-25.
- Nowak, R. M. 1991. *Walker's mammals of the world*. Baltimore: Johns Hopkins University Press.
- Nowak, R. M., and J. L. Paradiso. 1983. *Walker's mammals of the world*. Baltimore: Johns Hopkins University Press.
- O'Brien, S. J., W. G. Nash, D. E. Wildt, M. E. Bush, and R. E. Benveniste. 1985. A molecular solution to the riddle of the giant panda's phylogeny. *Nature* 317:140-44.
- O'Brien, S. J., R. E. Beauveniste, W. G. Nash, J. S. Martenson, M. A. Eichelberger, D. E. Wildt, M. Bush, R. K. Wayne, and D. Goldman. 1991. Molecular biology and evolutionary theory: The giant panda's closest relatives. In *New perspectives on evolution*, edited by L. Warren and H. Kropowski, pp. 225-80. New York: John Wiley and Sons.
- Ortolani, A. 1999. Spots, stripes, tail tips and dark eyes: Predicting the function of carnivore colour patterns using the comparative method. *Biol J Linn Soc* 67:433-76.
- Pan, W., L. Chen, and N. Xiao. 1981. Serological study of giant panda and various mammals. *Acta Scient Natur Univ* 1:79-88.
- Pecon Slattery, J., and S. J. O'Brien. 1995. Molecular phylogeny of the red panda (*Ailurus fulgens*). *J Hered* 86:413-22.
- Pei, W. C. 1974. A brief evolutionary history of the giant panda. *Acta Zool Sin* 20:188-90.
- Penny, D., and M. D. Henny. 1986. Estimating the reliability of evolutionary trees. *Mol Biol Evol* 3: 403-17.
- Peters, G. 1982. A note on the vocal behaviour of the giant panda, *Ailuropoda melanoleuca* (David, 1869). *Z Säugetierkd* 47:236-46.
- Pettigrew, J. D. 1986. Flying primates? Megabats have the advanced pathway from eye to midbrain. *Science* 231:1304-6.
- Pettigrew, J. D. 1991. Wings or brain: Convergent evolution in the origins of bats. *Syst Zool* 40: 199-216.
- Pirlot, P., S. S. Jiao, and J. Q. Xie. 1985. Quantitative morphology of the panda bear in comparison with the brains of the raccoon and the bear. *J Hirnforsch* 26:17-22.
- Piveteau, J. 1961. *Carnivora. Traité de Paléontologie*. Paris: Masson et Cie.
- Pocock, R. I. 1921. The external characters and classification of the Procyonidae. *Proc Zool Soc Lond* 1921:389-422.
- Pocock, R. I. 1928. Some external characters of the giant panda (*Ailuropoda melanoleuca*). *Proc Zool Soc Lond* 1928:975-81.
- Purvis, A. 1995. A modification to Baum and Ragan's method for combining phylogenetic trees. *Syst Biol* 44:251-55.
- Qiu, Z., and G. Qi. 1989. Ailuropod found from the Late Miocene deposits in Lufeng, Yunnan. *Vertebrata Palasiatica* 27:153-69.
- Radinsky, L. 1975. Viverrid neuroanatomy: Phylogenetic and behavioral implications. *J Mammal* 56:130-50.
- Ragan, M. A. 1992. Phylogenetic inference based on matrix representation of trees. *Mol Phylogenet Evol* 1:53-58.
- Ramsay, M. A., and R. L. Dunbrack. 1987. Is the giant panda a bear? *Oikos* 50:267.
- Raven, H. C. 1936. Notes on the anatomy of the viscera of the giant panda (*Ailuropoda melanoleuca*). *Am Mus Novit* 877:1-23.
- Repenning, C. A. 1990. Oldest pinniped. *Science* 248:499.
- Rodewald, K., G. Braunitzer, and R. Göltenboth. 1988. Carnivora: Primary structure of the hemoglobins from Ratel (*Mellivora capensis*). *Biol Chem Hoppe-Seyler* 369:1137-42.
- Romer, A. S., and T. S. Parsons. 1986. *The vertebrate body*. Philadelphia: Saunders College.
- Sanderson, M. J., and L. Hufford, eds. 1996. *Homoplasy: The recurrence of similarity in evolution*. San Diego: Academic.
- Sanderson, M. J., A. Purvis, and C. Henze. 1998. Phylogenetic supertrees: Assembling the trees of life. *Trends Ecol Evol* 13:105-9.
- Sarich, V. M. 1969a. Pinniped origins and the rate of evolution of carnivore albumins. *Syst Zool* 18: 286-95.

- Sarich, V. M. 1969b. Pinniped phylogeny. *Syst Zool* 18:416–22.
- Sarich, V. M. 1973. The giant panda is a bear. *Nature* 245:218–20.
- Sarich, V. M. 1975. Pinniped systematics: Immunological comparisons of their albumins and transferrins. *Am Zool* 15:826.
- Sarich, V. M. 1976. Transferrin. *Trans Zool Soc Lond* 33:165–71.
- Schaller, G. B., J. Hu, W. Pan, and J. Zhu. 1985. *The giant pandas of Wolong*. Chicago: University of Chicago Press.
- Schlosser, M. 1899. Über die Bären und bärenähnlichen des europäischen Teriärs. *Palaeontographica* 46:95–147.
- Schmidt-Kittler, V. 1981. Zur Stammesgeschichte der marderverwandten Raubtiergruppen (Musteloidea, Carnivora). *Eclogae Geol Helv* 74:753–801.
- Schreiber, A., K. Eulenberger, and K. Bauer. 1998. Immunogenetic evidence for the phylogenetic sister group relationship of dogs and bears (Mammalia, Carnivora: Canidae and Ursidae): A comparative determinant analysis of carnivoran albumin, C3 complement and immunoglobulin  $\mu$ -chain. *Exp Clin Immunogenet* 15:154–70.
- Seal, U. S., N. I. Phillips, and A. W. Erickson. 1970. Carnivora systematics: Immunological relationships of bear serum albumin. *Comp Biochem Physiol* 32:33–48.
- Segall, W. 1943. The auditory region of the arctoid carnivores. *Zool Ser Field Mus Nat Hist* 29:33–59.
- Simpson, G. G. 1945. The principles of classification and a classification of mammals. *Bull Am Mus Nat Hist* 85:1–350.
- Slade, R. W., C. Moritz, and A. Heideman. 1994. Multiple nuclear-gene phylogenies: Application to pinnipeds and comparison with a mitochondrial DNA gene phylogeny. *Mol Biol Evol* 11:341–56.
- Starck, D. 1978. *Vergleichende Anatomie der Wirbeltiere auf evolutionsbiologischer Grundlage*. Berlin: Springer-Verlag.
- Swofford, D. L. 1999. PAUP\*. *Phylogenetic analysis using parsimony (\*and other methods)*. Version 4. Sunderland: Sinauer Associates.
- Tagle, D. A., M. M. Miyamoto, M. Goodman, O. Hofmann, G. Braunitzer, R. Göltenboth, and H. Jalanka. 1986. Hemoglobin of pandas: Phylogenetic relationships of carnivores as ascertained with protein sequence data. *Naturwissenschaften* 73:512–14.
- Talbot, S. L., and G. F. Shields. 1996. A phylogeny of the bears (Ursidae) inferred from complete sequences of three mitochondrial genes. *Mol Phylogenet Evol* 5:567–75.
- Taylor, D. 1990. *The giant panda*. London: Boxtree.
- Tedford, R. H. 1976. Relationships of pinnipeds to other carnivores (Mammalia). *Syst Zool* 25:363–74.
- Thenius, E. 1979. Zur systematischen und phylogenetischen Stellung des Bambusbären: *Ailuropoda melanoleuca* David (Carnivora, Mammalia). *Z Säugetierkd* 44:286–305.
- Trouessart, É.-L. 1898. *Catalogus mammalium tam viventium quam fossilium*. Berolini: R. Friedländer.
- Trouessart, É.-L. 1904. *Catalogus mammalium tam viventium quam fossilium. Quinquennale supplementum*. Berolini: R. Friedländer und Sohn.
- Vane-Wright, R. L., C. J. Humphries, and P. H. Williams. 1991. What to protect? Systematics and the agony of choice. *Biol Conserv* 55:235–54.
- Vázquez, D. P., and J. L. Gittleman. 1998. Biodiversity conservation: does phylogeny matter? *Curr Biol* 8:R379–81.
- Veron, G., and F. M. Catzeflis. 1993. Phylogenetic relationships of the endemic Malagasy carnivore *Cryptoprocta ferox* (Aeluroideae): DNA/DNA hybridization experiments. *J Mamm Evol* 1:169–85.
- Vrana, P. B., M. C. Milinkovitch, J. R. Powell, and W. C. Wheeler. 1994. Higher level relationships of the arctoid Carnivora based on sequence data and “total evidence.” *Mol Phylogenet Evol* 3:47–58.
- Waits, L. P., J. Sullivan, S. J. O’Brien, and R. H. Ward. 1999. Rapid radiation events in the family Ursidae indicated by likelihood phylogenetic estimation from multiple fragments of mtDNA. *Mol Phylogenet Evol* 13:82–92.
- Walker, E. P. 1964. *Mammals of the world*. Baltimore: Johns Hopkins University Press.
- Wang, T. K. 1974. Taxonomic status of the species, geological distribution and evolutionary history of *Ailuropoda*. *Acta Zool Sin* 20:191–201.
- Wang, X. 1997. New cranial material of *Simocyon* from China, and its implications for phylogenetic relationship to the red panda (*Ailurus*). *J Vertebr Paleontol* 17:184–98.
- Wang, X., X. Chen, W. Jiang, C. Zheng, J. Zheng, and J. Ye. 1989. Use of rabbit antisera to IgG of giant panda in defining taxonomic position of giant panda. *Acta Theriol Sin* 9:94–97.
- Wayne, R. K., R. E. Benveniste, D. N. Janczewski, and S. J. O’Brien. 1989. Molecular and biochemical evolution of the Carnivora. In *Carnivore behavior, ecology, and evolution*, edited by J. L. Gittleman, pp. 465–94. Ithaca: Cornell University Press.
- Weber, M. 1904. *Die Säugetiere. Einführung in die Anatomie und Systematik der recenten und fossilen Mammalia*. Jena: G. Fischer.
- Weber, M. 1928. *Die Säugetiere. Einführung in die Anatomie und Systematik der recenten und fossilen Mammalia*. Jena: G. Fischer.



- Werdelin, L. 1996. Carnivoran ecomorphology: A phylogenetic perspective. In *Carnivore behavior, ecology, and evolution*, edited by J. L. Gittleman, pp. 582–624. Ithaca: Cornell University Press.
- Winge, H. 1895. *Jordfundne og nulevende Rovdyr (Carnivora) fra Lagoa Santa, Minas Geraes, Brasilien. Med Udsigt over Rovdyrenes indbyrdes Slægtskab [Fossil and living carnivores (Carnivora) from Lagoa Santa, Minas Geraes, Brazil. With a review of the interrelationships of the Carnivores]*. Copenhagen: F. Dreyer.
- Winge, H. 1941. *The interrelationships of the mammalian genera*. Copenhagen: C. A. Reitzels.
- Wolsan, M. 1993. Phylogeny and classification of early European Mustelida (Mammalia: Carnivora). *Acta Theriol* 38:345–84.
- Wozencraft, W. C. 1984. A phylogenetic reappraisal of the Viverridae and its relationship to other Carnivora. Ph.D. dissertation. University of Kansas, Lawrence.
- Wozencraft, W. C. 1989. The phylogeny of the Recent Carnivora. In *Carnivore behavior, ecology, and evolution*, edited by J. L. Gittleman, pp. 495–535. Ithaca: Cornell University Press.
- Wozencraft, W. C. 1993. Order Carnivora. In *Mammal species of the world: A taxonomic and geographic reference*, edited by D. E. Wilson, and D. A. Reeder, pp. 279–348. Washington, D.C.: Smithsonian Institution Press.
- Wurster, D. H. 1969. Cytogenetic and phylogenetic studies in Carnivora. In *Comparative mammalian cytogenetics*, edited by K. Benirschke, pp. 310–29. New York: Springer-Verlag.
- Wurster, D. H., and K. Benirschke. 1968. Comparative cytogenetic studies in the order Carnivora. *Chromosoma* 24:336–82.
- Wurster-Hill, D. H., and M. Bush. 1980. The interrelationships of chromosome banding patterns in the giant panda (*Ailuropoda melanoleuca*), hybrid bear (*Ursus middendorfi* × *Thalarctos maritimus*) and other carnivores. *Cytogenet Cell Genet* 27: 147–54.
- Wyss, A. R. 1987. The walrus auditory region and the monophyly of pinnipeds. *Am Mus Novit* 2871:1–31.
- Wyss, A. R., and J. J. Flynn. 1993. A phylogenetic analysis and definition of the Carnivora. In *Mammalian phylogeny: Placentals*, edited by F. S. Szalay, M. J. Novacek, and M. C. McKenna, pp. 32–52. New York: Springer-Verlag.
- Zhang, Y. P., and O. A. Ryder. 1993. Mitochondrial DNA sequence evolution in the Arctoidea. *Proc Natl Acad Sci USA* 90:9557–61.
- Zhang, Y. P., and O. A. Ryder. 1994. Phylogenetic relationships of bears (the Ursidae) inferred from mitochondrial DNA sequences. *Mol Phylogenet Evol* 3:351–59.
- Zhang, Y. P., and L. M. Shi. 1991. Riddle of the giant panda. *Nature* 352:573.